



**H**E whom this scroll commemorates was numbered among those who, at the call of King and Country, left all that was dear to them, endured hardness, faced danger, and finally passed out of the sight of men by the path of duty and self-sacrifice, giving up their own lives that others might live in freedom. Let those who come after see to it that his name be not forgotten.

15095, PRIVATE, James Albert BARNES

2nd Battalion.

Northumberland Fusiliers

Killed in action, France & Flanders, 04/10/15

Born: Accrington, Lancs, Enlisted: Preston, Lancs

**In Memory of  
Private JAMES ALBERT BARNES**

**15095, 2nd Bn.,  
Northumberland Fusiliers**

**who died on 04 October 1915**

**Remembered with honour  
LOOS MEMORIAL**



**Commemorated in perpetuity by  
the Commonwealth War Graves Commission**

## Medals awarded to Private 15095 James Albert BARNES, Northumberland Fusiliers



### **The 1914 – 15 Star**

Established in December 1918

Also known as '*Pip*'.

This bronze medal was authorized in 1918. It is very similar to the 1914 Star but it was issued to a much wider range of recipients. Broadly speaking it was awarded to all who served in any theatre of war against Germany between 5<sup>th</sup> August 1914 and 31<sup>st</sup> December 1915, except those eligible for the 1914 Star. Similarly, those who received the Africa General Service Medal or the Sudan 1910 Medal were not eligible for the award.

Like the 1914 Star, the 1914-15 Star was not awarded alone. The recipient had to have received the British War Medal and the Victory Medal. The reverse is plain with the recipient's service number, rank, name and unit impressed on it.

An estimated 2.4 million of these medals were issued.



### **The British War Medal 1914 - 1918**

Established on 26<sup>th</sup> July 1919.

Also known as '*Squeak*'.

The silver or bronze medal was awarded to officers and men of the British and Imperial Forces who either entered a theatre of war or entered service overseas between 5<sup>th</sup> August 1914 and 11<sup>th</sup> November 1918 inclusive. This was later extended to services in Russia, Siberia and some other areas in 1919 and 1920.

Approximately 6.5 million British War Medals were issued.

Approximately 6.4 million of these were the silver versions of this medal. Around 110,000 of a bronze version were issued mainly to Chinese, Maltese and Indian Labour Corps. The front (obv or obverse) of the medal depicts the head of George V.

The recipient's service number, rank, name and unit was impressed on the rim.



### **The Allied Victory Medal**

Also known as '*Wilfred*'

It was decided that each of the allies should each issue their own bronze victory medal with a similar design, similar equivalent wording and identical ribbon.

The British medal was designed by W. McMillan. The front depicts a winged classical figure representing victory.

Approximately 5.7 million victory medals were issued. Interestingly, eligibility for this medal was more restrictive and not everyone who received the British War Medal ('Squeak') also received the Victory Medal ('Wilfred'). However, in general, all recipients of 'Wilfred' also received 'Squeak' and all recipients of 'Pip' also received both 'Squeak' and 'Wilfred'.

The recipient's service number, rank, name and unit was impressed on the rim.



**The bronze Memorial Plaque similar to that awarded to the next-of-kin of Private BARNES**



**Cap badge of the Northumberland Fusiliers**



**Name:** BARNES, JAMES ALBERT

**Initials:** J A

**Nationality:** United Kingdom

**Rank:** Private

**Regiment/Service:** Northumberland Fusiliers

**Unit Text:** 2nd Bn.

**Date of Death:** 04/10/1915

**Service No:** 15095

**Casualty Type:** Commonwealth War Dead

**Grave/Memorial Reference:** Panel 20 to 22.

**Memorial:** [LOOS MEMORIAL](#)

**Cemetery:** LOOS MEMORIAL

**Country:** France

**Locality:** unspecified

**Visiting Information:** Wheelchair access to the cemetery is possible, but may be by alternative entrance. For further information regarding wheelchair access, please contact our Enquiries Section on 01628 507200. The Panel Numbers quoted at the end of each entry relate to the panels dedicated to the Regiment served with. In some instances where a casualty is recorded as attached to another Regiment, his name may alternatively appear within their Regimental Panels. Please refer to the on-site Memorial Register Introduction to determine the alternative panel numbers if you do not find the name within the quoted Panels.

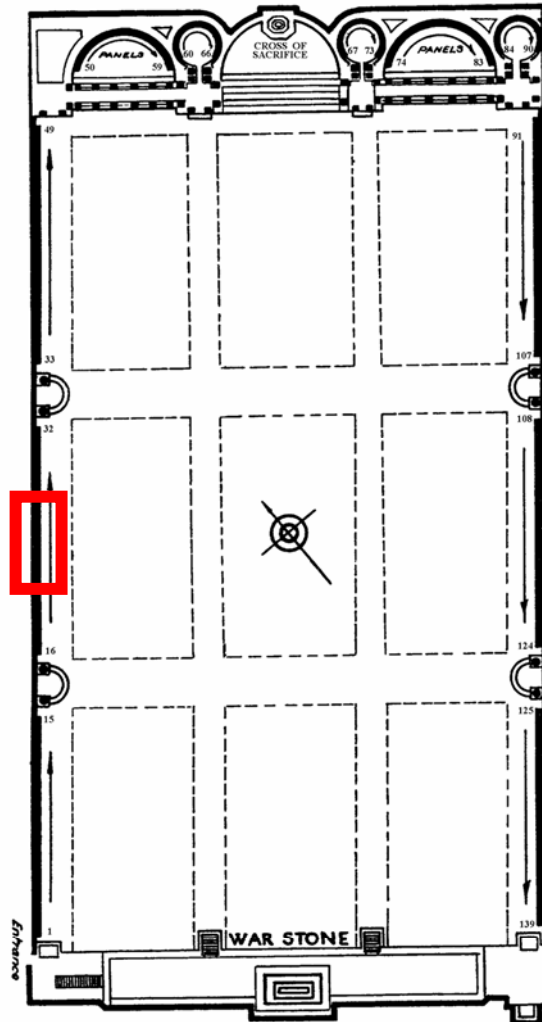
**Location Information:** The Loos Memorial forms the side and back of Dud Corner Cemetery, and commemorates over 20,000 officers and men who have no known grave, who fell in the area from the River Lys to the old southern boundary of the First Army, east and west of Grenay. Loos-en-Gohelle is a village 5 kilometres north-west of Lens, and Dud Corner Cemetery is located about 1 kilometre west of the village, to the north-east of the N43 the main Lens to Bethune road.

**Historical Information:** Dud Corner Cemetery stands almost on the site of a German strong point, the Lens Road Redoubt, captured by the 15th (Scottish) Division on the first day of the battle. The name "Dud Corner" is believed to be due to the large number of unexploded enemy shells found in the neighbourhood after the Armistice. On either side of the cemetery is a wall 15 feet high, to which are fixed tablets on which are carved the names of those commemorated. At the back are four small circular courts, open to the sky, in which the lines of tablets are continued, and between these courts are three semicircular walls or apses, two of which carry tablets, while on the centre apse is erected the Cross of Sacrifice.

**No. of Identified Casualties:** 20581

# Cemetery Plans LOOS MEMORIAL

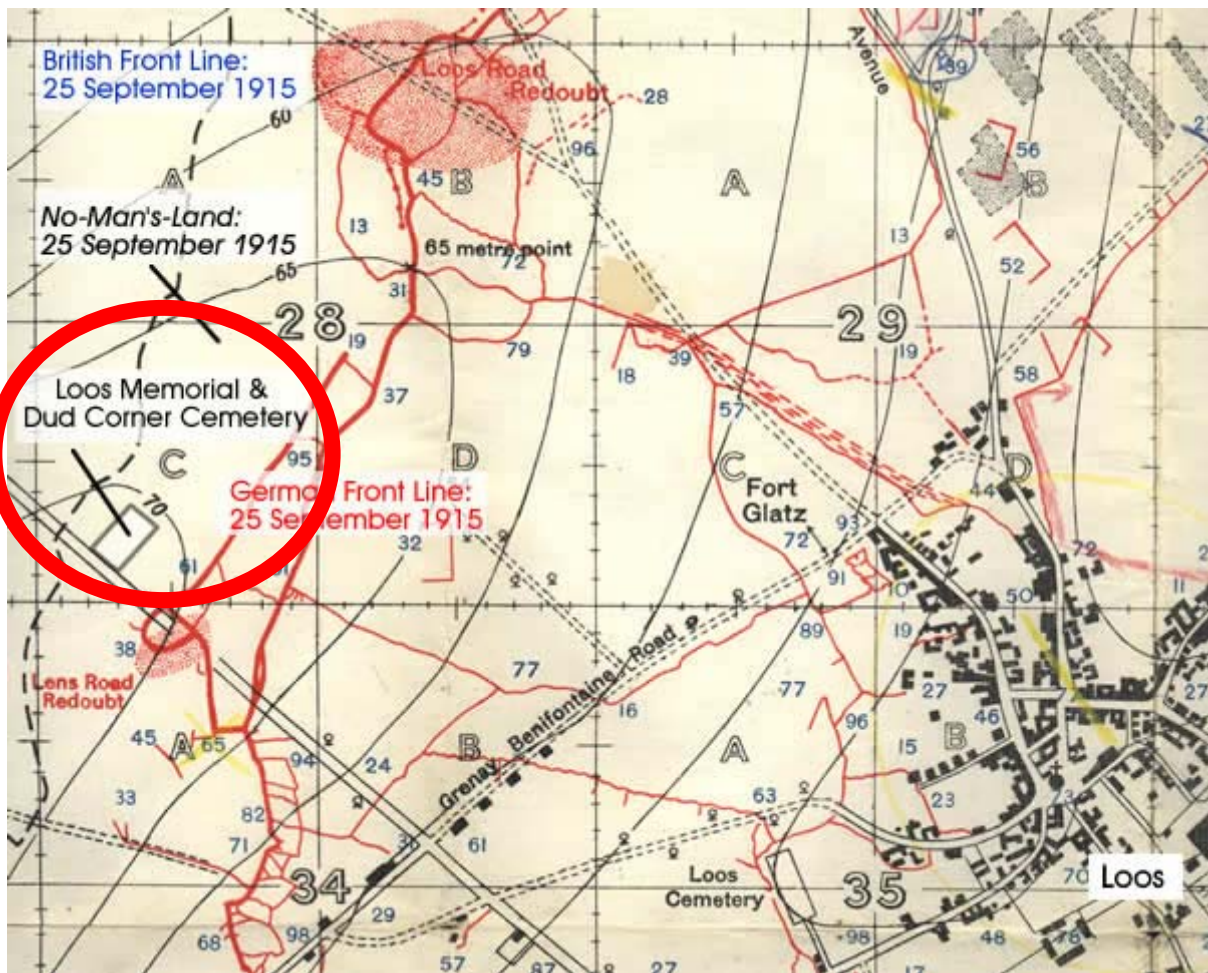
## MEMORIAL



LAYOUT OF THE PANELS, LOOS MEMORIAL



The Loos Memorial with the panels 20 – 22 highlighted  
and with Barnes J.A. inscribed on the panel



**Location of the Loos Memorial highlighted**

The date of 25<sup>th</sup> September was the launch of the Allied autumn offensive in a combined attack of British and French troops against the German line in Artois and Champagne. One of the major battles in that offensive was the **Battle of Loos** (25<sup>th</sup> September - 13<sup>th</sup> October 1915), fought by the British First Army under the command of General Douglas Haig in this Lens-La Bassée sector. The launch of the battle at first light on the morning of 25<sup>th</sup> September witnessed the first use by the British Army of chlorine gas as a cloud of poisonous gas on the battlefield. Earlier in that year the Germans had first tested chlorine gas against the French and British in April and May in the Ypres Salient.





## **Casualties in the Battle of Loos**

*View from the viewing platform at Loos Memorial, looking east towards Loos village and the higher ground beyond it, where the German Second Position was located. Within 24 hours of their evacuation to the Second Position, the Germans established a good line of defence there. From the higher ground they had an advantageous outlook over the British, who were now attacking the German Second Position uphill and in full view after their initial success in the breakthrough of the German Front Line.*

In the first hours of the battle the German Front Line at the Lens Road Redoubt was successfully breached by the 15th (Scottish) Division and the Scottish battalions advanced into Loos village. North of the 15th Division the British 1st Division was held up until about 3pm by a gallant stand made by a German battalion commander, Captain Ritter, and a few hundred of his men. With no way out but to sacrifice his men, Captain Ritter eventually decided to surrender in the mid afternoon. The British advance was able to continue north of Loos village.

The German defence of the Front Line at Loos village consisted of one regiment of about 2,800 men, this being the 157 Infanterie-Regiment, and four gun batteries of 233 Field Artillery Regiment. The German defence was overwhelmed and the Germans evacuated the village during the late morning. Moving eastwards to their second line of defence, located on slightly higher ground to the east of Loos and Hulluch villages, the Germans who escaped capture or death reassembled there.

At the end of the morning of 25<sup>th</sup> September several Scottish battalions from 15th Scottish Division left the eastern exit of Loos village and made their way to the crest of the higher ground south-east of the village. They had seen men running in a south-easterly direction towards the built-up area of Lens and Cité St. Auguste. Mistakenly believing the men to be British they followed on over the crest of Hill 70. The gentle rise in the ground was called Hill 70 on British Army maps because it was on the 70 metres above sea level contour line. From accounts by the German 157th Infantry

Regiment it is believed, however, that the men they had seen running were most likely some of the German stragglers evacuating Loos village, including a German battalion commander who ran off in search of a working telephone in Cité St. Auguste.



*Looking towards the northern building at the entrance of the cemetery and memorial. The Lens-Béthune road is on the left of the picture. The War Stone is in the centre of the picture.*

A German battalion commander, Major Grause, of the III Battalion 178 Infanterie-Regiment believed that he might be able to prevent Lens from falling into British hands. He was planning an enveloping movement to cut off the Scotsmen who he had seen appearing to his front over the hill at Hill 70. Some Scottish soldiers had advanced over the crest and down the slope to within 100 yards of the German wire at the German Second Position. They had started digging in to the hard chalky soil.

With two companies on his left flank hiding at the bottom of the slope of Hill 70, unseen behind the railway embankment near Fosse 12, Major Grause ordered his right hand two companies to provide supporting fire from the Lens-Hulluch road. At about 1pm, coming under fire from Major Grause's men, a few Scotsmen started to leave what cover they had, crawling at first and then breaking into a run to scramble back up to the crest of Hill 70. The gradual breaking up of this enemy resistance became apparent to Major Grause. In the hopelessness of their situation more and more Scotsmen tried to get back to the crest of the hill over the 600 yards of exposed, bare slope. The Germans down in at the railway embankment at the bottom of the hill spontaneously gave chase. Rushing forward they chased the Scotsmen up the hill shooting and bayonetting. Some stood still to aim fire, picking off the Scotsmen as they were silhouetted on the skyline.



*Looking at the War Stone and to the south-east towards the Double Crassier slag heap, which was there on the 1914-1918 Loos battlefield.*

The cheers of the two companies of Germans advancing on the left from the railway embankment infected the other two companies on their right at the Lens-Hulluch road. Without orders to do so they rushed wildly forward on a broad front towards the Hill 70 summit. The regimental account describes how German cheers filled the air as they charged forward over the dead and dying Scotsmen. Within an hour, by 2pm, the important task for the III Battalion of 178 Infanterie-Regiment had been accomplished and the high ground of Hill 70 to the north of Lens was again in German hands. For the British, this incident cost many casualties to the 15th Scottish Division, most of whom remained where they fell until the end of the war in what became No-Man's-Land. These soldiers are among the many thousands named on the Loos Memorial to the Missing.

On the second day of the Battle of Loos the casualties were also very heavy for two British Divisions, 21st and 24th Divisions. They had arrived from the reserve positions west of Loos too late to follow up the British successes of the first day of the battle, 25<sup>th</sup> September. They were put into the fight on the following day, 26<sup>th</sup> September, crossing open ground towards the higher ground of the German Second Position, which the Germans had reinforced during the night. In addition, four German guards divisions were on their way to arrive in the Second Position by nightfall on 26<sup>th</sup> September to reinforce this weakened point in the German 6th Army defensive line. The two British divisions went into the attack in daylight, exposed and moving across several hundred metres of open ground. They were cut down by German machine gun and rifle fire. German accounts write of how they watched hundreds of wounded British soldiers trying to crawl back towards the village of Loos during the afternoon and evening.

A description of the desolate scene was given by Leutnant Aschenbach, observation officer of the 6th gun Battery of the German 233 Feld-Artillerie-Regiment. On 25<sup>th</sup> September, luckily for him, he was on a day off and was at rest in a village behind the front line. By the end of 26<sup>th</sup> September he was in a forward observation post about 1 kilometre north of the wood of Bois Hugo. He said he crawled into No-Mans-Land that evening and was confronted with a shocking sight of about 500 British dead piled up in one small area in front of the German wire. He implied they had simply been mown down. He found several dead officers including a white-haired colonel on the wire. He praised the courage of the British commanding officers to have been in the thick of the fight and was deeply moved that so many brave men had lost their lives.

It is possible that the white-haired colonel, whom Aschenbach remembered so vividly, could have been Colonel Frederick Charles Romer, C.B., C.M.G., aged 64 and commanding the 8th battalion the Buffs (East Kent Regiment). He attacked on 26<sup>th</sup> September in this same place with his men. Colonel Romer was wounded in the shoulder, but insisted on staying with his men in the battle. He was later shot through the heart, dying on the battlefield on 26<sup>th</sup> September 1915.<sup>(3)</sup> His remains were never identified for burial in a marked grave. He is named on the Loos Memorial at Panel 15 to 19.

Leutnant Aschenbach also recounted a harrowing scene which he witnessed some days after the start of the battle. He wrote that German medics had gone out into No-Man's-Land to pick up British wounded, some of whom had been lying on the battlefield for six days, being very badly wounded and they hadn't been able to drag themselves back to their own lines. The weather had been bad during that time with lots of heavy rain. They had had no food or drink. Leutnant Aschenbach said he had heard them crying out in No-Man's-Land. In the daylight he watched German medics moving about under cover of a red cross sign. He said that British guns had fired into the area several times forcing the German medics to run for cover, but they were persistent and went out again once darkness had fallen.

<http://www.greatwar.co.uk/french-flanders-artois/memorial-loos-memorial.htm>



## Private 15095 James Albert BARNES

Penwortham St. Mary's Church Magazine                      December, 1914                      Page vii

J. Barnes has "joined up".

Penwortham St. Mary's church Magazine                      December, 1915                      Page vii

Pte. James Barnes is reported as "missing" on October 1<sup>st</sup>. He is an only child.

### Newspaper searches

1915 Haslingden Gazette    No trace entry for James Albert BARNES

1915 Haslingden Gazette    No trace entry for James Albert BARNES  
(October) (Nov. & Dec. Missing)

1953 Haslingden Observer    No trace entry for Ellen Ann BARNES

### Barratts Trade Directories of Preston

No trace of an entry in 1910 or 1922

1926 Page 640    Barnes, Mrs. Ellen Ann, Wham Lane, Longton

1932 Page 581    Barnes, Mrs. Ellen A., Wham Lane, Longton

1936 Page 731    Barnes, Mrs. Ellen, Wham Lane, Longton

## **IN MEMORY OF OUR BAXENDEN LADS 1914 – 1918 & 1939 - 1946**

**Wm. Turner - November 1994**

PTE. 15095 JAMES ALBERT BARNES of the Northumberland Fusiliers was killed in action in the early fighting on the Somme battlefields in France on October 4th 1915.

James was born in Accrington and enlisted in Preston in the Northumberland Fusiliers at the outbreak of war in August 1914. He is listed as a former resident of Baxenden in St. John's Roll of Honour published in the Haslingden Gazette in September 1915.

James' body was never found or identified.

[http://www.microloft.co.uk/bax\\_lads/barnes.htm](http://www.microloft.co.uk/bax_lads/barnes.htm)



The Township of Haslingden,  
Rossendale  
in the County of  
-- Lancashire --

There were 2 matches for this search!

Baptism: 30 Jul 1841 St James, Haslingden, Lancashire, England  
George Barnes - Son of George Barnes & Mary  
Abode: Higher Barn  
Occupation: Farmer  
Baptised by: T Sewell  
Register: Baptisms 1834 - 1844, Entry 1264  
Source: LDS Film 1040346

In the results below, the reference number will be a link. Clicking on this link will add your choice to a summary list on a new page. From this [summary page](#) you will be able to review all your search results and you will find links to printable application forms which can be used to order the certificate for the index entry. Full details of the charges and the Register Office address can be found on the form.

### Lancashire Marriage indexes for the years: 1866

Surname	Forename(s)	Surname	Forename(s)	Church / Register Office	Registers At	Reference
BARNES	George	CATTERALL	Ellen	Hyndburn Register Office or Registrar Attended	Preston	<a href="#">RM/25/48</a>

**Total records matching : 1**

If you haven't found the **George BARNES** that you're looking for, it may be that the indexes for your area of interest have not been transcribed yet. See our [coverage](#) page for more information.

Where the first surname is a web link followed by an asterisk (\*), it signifies that there are alternative entries in the database for this reference number. Click on the surname to display the full list of alternatives and an explanation of why this occurs.

**Many other** counties have their BMD indexes on-line. If you can't find the entry in this area, perhaps you could try a neighbouring area.



See the **Local BMD** section of Information regarding the purchase of certificates can be found in the [Marriages Information](#) page.

Click on the appropriate reference number in the tables above to add your choice to your [summary page](#). From the summary page you will be able to review all your search choices and print off application forms to order copy certificates.

**NOTE:** Each Region's Register Office has a different address. Please be sure to send your application to the correct office, otherwise your application may be rejected.

The appropriate address will be found near the bottom of the application form.

# Lancashire BMD

Births, Marriages and Deaths on the Internet

In the results below, the reference number will be a link. Clicking on this link will add your choice to a summary list on a new page. From this [summary page](#) you will be able to review all your search results and you will find links to printable application forms which can be used to order the certificate for the index entry. Full details of the charges and the Register Office address can be found on the form.

Lancashire Birth indexes for the years: 1866					
Surname	Forename(s)	Sub-District	Registers At	Mother's Maiden Name	Reference
BARNES	George William	Haslingden	Preston	CATTERALL	<a href="#">HAS/20/88</a>

Lancashire Birth indexes for the years: 1868					
Surname	Forename(s)	Sub-District	Registers At	Mother's Maiden Name	Reference
BARNES	John Henry	Haslingden	Preston	CATTERALL	<a href="#">HAS/22/25</a>

Lancashire Birth indexes for the years: 1869					
Surname	Forename(s)	Sub-District	Registers At	Mother's Maiden Name	Reference
BARNES	Sarah Jane	Haslingden	Preston	CATTERALL	<a href="#">HAS/23/48</a>

Lancashire Birth indexes for the years: 1879					
Surname	Forename(s)	Sub-District	Registers At	Mother's Maiden Name	Reference
BARNES	Albert	Haslingden	Preston	CATTERALL	<a href="#">HAS/33/13</a>

Lancashire Birth indexes for the years: 1881					
Surname	Forename(s)	Sub-District	Registers At	Mother's Maiden Name	Reference
BARNES	Herbert	Haslingden	Preston	CATTERALL	<a href="#">HAS/35/24</a>

Lancashire Birth indexes for the years: 1884					
Surname	Forename(s)	Sub-District	Registers At	Mother's Maiden Name	Reference
BARNES	Mary Ellen	Haslingden	Preston	CATTERALL	<a href="#">HAS/37/27</a>

Lancashire Birth indexes for the years: 1886					
Surname	Forename(s)	Sub-District	Registers At	Mother's Maiden Name	Reference
BARNES	Bertha	Haslingden	Preston	CATTERALL	<a href="#">HAS/39/81</a>

Lancashire Birth indexes for the years: 1888					
Surname	Forename(s)	Sub-District	Registers At	Mother's Maiden Name	Reference
BARNES	Wilfrid	Haslingden	Preston	CATTERALL	<a href="#">HAS/41/52</a>

**No matching records were found for BARNES in the following years:**

1865, 1867, 1870, 1871, 1872, 1873, 1874, 1875, 1876, 1877, 1878, 1880, 1882, 1883, 1885, 1889, 1890

If you haven't found the BARNES that you're looking for, it may be that the indexes for your area of interest have not been transcribed yet. See our [coverage](#) page for more information.

**Many other** counties have their BMD indexes on-line. If you can't find the entry in this area, perhaps you could try a neighbouring area. See the **Local BMD** section of Information regarding the purchase of certificates can be found in the [Birth Information](#) page.

**UK BMD**  
Births, Marriages, Deaths and  
Censuses on the Internet





**Higher Barn Farm  
Roundhill Road  
Haslingden  
BB5 3SW**

Page 2] The undermentioned Houses are situate within the Boundaries of the

Parish [or Township] of <i>Haslingden</i>		City or Municipal Borough of		Municipal Ward of		Parliamentary Borough of		Town of		Hamlet or Tything, &c., of		Ecclesiastical District of <i>the Parochial Chapelry of Haslingden</i>	
No. of Schedules	Road, Street, &c., and No. or Name of House	HOUSES		Name and Surname of each Person	Relation to Head of Family	Condition	Age of		Rank, Profession, or Occupation	Where Born		Whether Blind, or Deaf, and-Dumb	
		In- habited	Unin- habited (No. or Building (B.))				Males	Females					
4	<i>Moar gate Moar Lane Farm</i>	1		<i>Ralph Haworth</i>	<i>Head</i>	<i>Mar</i>	<i>53</i>		<i>Farmer of 22 acre</i>	<i>Lancashire</i>	<i>Haslingden</i>		
				<i>Mary Haworth</i>	<i>Wife</i>	<i>Mar</i>	<i>59</i>		<i>Farmer's Wife</i>	<i>"</i>	<i>"</i>		
				<i>James Haworth</i>	<i>Son</i>	<i>Wife</i>	<i>21</i>		<i>Bottom Power loom Weaver</i>	<i>"</i>	<i>Accrington</i>		
				<i>Mary Stevenson</i>	<i>Grandmother</i>		<i>5</i>			<i>"</i>	<i>Brown Bottom</i>		
5	<i>Higher Barn</i>	1		<i>Henry Haworth</i>	<i>Head</i>	<i>Mar</i>	<i>37</i>		<i>Bottom Power loom Weaver</i>	<i>"</i>	<i>Haslingden</i>		
				<i>Mild Haworth</i>	<i>Wife</i>	<i>Mar</i>	<i>38</i>			<i>"</i>	<i>"</i>		
				<i>George Haworth</i>	<i>Son</i>		<i>10</i>		<i>Short Weaver and Scholar</i>	<i>"</i>	<i>"</i>		
				<i>Mary J Haworth</i>	<i>Daughter</i>		<i>5</i>			<i>"</i>	<i>"</i>		
				<i>John Haworth</i>	<i>Son</i>		<i>3</i>			<i>"</i>	<i>"</i>		
				<i>David Tomlinson</i>	<i>Head</i>	<i>Mar</i>	<i>46</i>		<i>Bottom Power loom Weaver</i>	<i>Lanc</i>	<i>Manchester</i>		
6		1		<i>Martha Tomlinson</i>	<i>Wife</i>	<i>Mar</i>	<i>46</i>			<i>"</i>	<i>"</i>		
				<i>David Tomlinson</i>	<i>Son</i>	<i>Unmar</i>	<i>18</i>		<i>Bottom Power loom Weaver</i>	<i>"</i>	<i>"</i>		
				<i>Joseph Tomlinson</i>	<i>Son</i>		<i>13</i>		<i>Bottom Pinner</i>	<i>"</i>	<i>"</i>		
				<i>Edwin Tomlinson</i>	<i>Son</i>		<i>8</i>		<i>Scholar</i>	<i>"</i>	<i>"</i>		
				<i>Henry Tomlinson</i>	<i>Son</i>		<i>4</i>		<i>"</i>	<i>"</i>	<i>"</i>		
				<i>Martha Tomlinson</i>	<i>Daughter</i>		<i>1</i>			<i>Lancashire</i>	<i>Haslingden</i>		
7	<i>Farm</i>	1		<i>George Barnes</i>	<i>Head</i>	<i>Mar</i>	<i>69</i>		<i>Farmer of 9 acre</i>	<i>"</i>	<i>"</i>		
				<i>Mary Barnes</i>	<i>Wife</i>	<i>Mar</i>	<i>61</i>		<i>Farmer's Wife</i>	<i>"</i>	<i>Accrington</i>		
				<i>Mary J Barnes</i>	<i>Daughter</i>	<i>Unmar</i>	<i>26</i>		<i>Bottom Power loom Weaver</i>	<i>"</i>	<i>Haslingden</i>		
				<i>John Barnes</i>	<i>Daughter</i>	<i>Unmar</i>	<i>23</i>		<i>"</i>	<i>"</i>	<i>"</i>		
				<i>George Barnes</i>	<i>Son</i>		<i>19</i>		<i>Bottom Power loom Jobber</i>	<i>"</i>	<i>"</i>		
4	Total of Houses...	4	296	Total of Males and Females...		12	9						

Eng.—Sheet D.

PUBLIC RECORD OFFICE						Reference :-	COPYRIGHT PHOTOGRAPH—NOT TO BE REPRODUCED PHOTOGRAPHICALLY WITHOUT PERMISSION OF THE PUBLIC RECORD OFFICE, LONDON
1	2	3	4	5	6	R.G. 9/3060.	

1861 Census showing the Barnes family at Higher Barn (3) Farm, Haslingden  
RG 9 / 3060 / Folio 49 / Page 2 / Sch. 7



The undermentioned Houses are situate within the Boundaries of the										[Page 27]	
* Civil Parish (or Township) of	City or Municipal Borough of	Municipal Ward of	Parliamentary Borough of	Town of	Village or Hamlet, &c., of	Local Board, or [Improvement Commissioners District] of	Ecological District of				
Haslingden							Haslingden				
No. of Schedule	ROAD, STREET, &c., and No. or NAME of HOUSE	HOUSES Inhabited (U.) or Building (B.)	NAME and Surname of each Person	RELATION to Head of Family	CON-DITION	AGE of		Rank, Profession, or OCCUPATION	WHERE BORN	Whether 1. Deaf-and-Dumb 2. Blind 3. Imbecile or Idiot 4. Lunatic	
						Males	Females				
129	Higher Houshey	1	James Barnes	Head	Man	29		Farmer of 6 Acres	Lancashire Haslingden		
130	Do.	1	William Barnes	Head	Widow	48		Cotton Weaver	do do		
			Ellen do	Sister	Woman	27		do do	do do		
			James do	Boyl	Man	24		do do	do do		
131	Do	1	John Barnes	Head	Man	37		Coke Burner	do do		
			Jane do	Wife	Woman	31			do Haslingden		
			James do	Son		8		Scholar	do Haslingden		
			Elizth Jane do	Daughter		6		-do-	do do		
			W. Whitworth do	Son		5			do do		
			Nancy do	Daughter		2			do do		
			Martha A do	Daughter		17/10			do do		
132	Do	1	James Robinson	Head	Man	56		Farmer of 18 Acres	do do		
			Susan do	Wife	Woman	63		Farmer's Wife	do do		
			Samuel do	Daughter	Woman	21		Cotton Weaver	do do		
133	Do	1	Mary Riley	Head	Widow	40			do Edwinstrey		
			Joseph do	Son		14	12	Precler in Cotton Mill	do Haslingden		
			Thomas do	Son		10		do do	do do		
			Mary do	Daughter		7		Scholar	do do		
			George do	Son		3		do do	do do		
134	Higher Barn	1	John Barnes	Head	Man	29		Farmer of 4 1/2 Acres	do do		
			Ellen do	Wife	Woman	26		Farmer's Wife	do Blackburn		
			George W do	Son		14		Scholar	do Haslingden		
			John do	Son		3			do do		
			Samuel do	Daughter		1			do do		
Total of Houses..		6	Total of Males and Females..			13	11				

\* Draw the pen through such of the words as are inappropriate.

Eng- Sheet F.

The 1871 Census showing the Barnes family at Higher Barn, Haslingden  
RG 10 / 4140 / Folio 62 / Page 27 / Sch. 134

PUBLIC RECORD OFFICE

Reference -  
RG10/4140

COPYRIGHT PHOTOGRAPH - NOT TO BE REPRODUCED PHOTOGRAPHICALLY WITHOUT PERMISSION OF THE PUBLIC RECORD OFFICE, LONDON

The undermentioned Houses are situate within the Boundaries of the

Civil Parish (or Township) of <i>New Accrington</i>		City or Municipal Borough of <i>Accrington</i>		Municipal Ward of	Parliamentary Borough of <i>Accrington</i>	Town of <i>Baxenden</i>	Village or Hamlet, &c., of <i>Accrington</i>	Local Board, or (Improvement Commissioners District) of <i>Christ Church</i>	Eccelesiastical District of		
No. of Schedule	ROAD, STREET, &c., and No. or NAME of HOUSE	HOUSES		NAME and Surname of each Person	RELATION to Head of Family	CON-DITION	AGE of		Rank, Profession, or OCCUPATION	WHERE BORN	Whether 1. Deaf-and-Dumb 2. Blind 3. Imbecile or Idiot 4. Lunatic
		In-habit-ed	Un-in-habit-ed (U.A. or B.B.)				Males	Females			
238	<i>Moore Side Farm 1</i>			<i>Mylius Walsh</i>	<i>Head</i>	<i>Mar</i>	<i>51</i>		<i>lotton Weaver</i>	<i>Lancashire Oswaldtwistle</i>	
				<i>Mary Do</i>	<i>Wife</i>	<i>Mar</i>	<i>25</i>			<i>Do Haslingden</i>	
				<i>John Do</i>	<i>Son</i>		<i>3</i>			<i>Do Accrington</i>	
				<i>James Do</i>	<i>Son</i>		<i>2</i>	<i>M</i>		<i>Do Do</i>	
239	<i>Do</i>			<i>Garrance Ruston</i>	<i>Head</i>	<i>Mar</i>	<i>60</i>		<i>lotton Weaver</i>	<i>Do Do</i>	
				<i>Ann Do</i>	<i>Wife</i>	<i>Mar</i>	<i>61</i>			<i>Do Hunsley</i>	
				<i>Josannah Do</i>	<i>Serv</i>	<i>Mar</i>	<i>27</i>		<i>Do Do</i>	<i>Do Haslingden</i>	
				<i>John Do</i>	<i>Son</i>	<i>Mar</i>	<i>20</i>		<i>Do Do</i>	<i>Do Haslingden</i>	
241	<i>Fria Hill Farm 1</i>			<i>James Maden</i>	<i>Head</i>	<i>Mar</i>	<i>42</i>		<i>Farmer of 12 Acres</i>	<i>Do Haslingden</i>	
				<i>Betty Do</i>	<i>Wife</i>	<i>Mar</i>	<i>40</i>		<i>Farmer's Wife</i>	<i>Do Longho</i>	
				<i>James Do</i>	<i>Wife</i>	<i>Mar</i>	<i>19</i>		<i>Farm Servant</i>	<i>Do Accrington</i>	
				<i>Betty Do</i>	<i>Miss in June</i>	<i>Mar</i>	<i>19</i>		<i>lotton Weaver</i>	<i>Do Oswaldtwistle</i>	
				<i>Lalish Do</i>	<i>Apprentice</i>		<i>5</i>	<i>M</i>		<i>Do Do</i>	
				<i>James Maden</i>			<i>67</i>		<i>Labourer</i>	<i>Do Do</i>	
3	Total of Houses..	3		Total of Males and Females..			8	6			

Draw the pen through such of the words as are inappropriate.

Eng- Sheet B.

The 1871 Census showing the MADEN family at Friar Hill Farm, Baxenden  
RG 10 / 4145, Folio 103, page 7, Sch. 241

PUBLIC RECORD OFFICE

Reference - RG 10 / 4145

COPYRIGHT PHOTOGRAPH - NOT TO BE REPRODUCED PHOTOGRAPHICALLY WITHOUT PERMISSION OF THE PUBLIC RECORD OFFICE, LONDON



Name	District	Vol.	Page
BARNES, Francis	Cockermouth	10 b.	534
Francis William	Walsingham	4 b.	283
Frank	Totes	5 b.	201
Frank	Barton	8 c.	628
Frank	Lambeth	1 d.	337
George	Faversham	2 a.	807
Frederick	St. Geo. East	1 c.	434
Frederick Charles	Forehoe	4 b.	179
Frederick James	Skipiton	9 a.	62
Frederick Richard	Greenwich	1 d.	971
George	St. Geo. H. Sq.	1 a.	424
George	Leigh	8 c.	252
George	Burley	8 c.	257
George Edward	St. Saviour	1 d.	72
George Frederick	Barnet	3 a.	170
George Frederick	King's N.	6 c.	495
George Harry	E. Ashford	2 a.	733
George Harry	Ashby Z.	7 a.	101
George Henry	Shoreditch	1 c.	159
George Henry	Altrincham	8 a.	181
George John	Kensington	1 a.	37
George Leonard	Chipping N.	3 a.	740
George William	Chapel Bury	8 c.	483
Gertrude	Oldham	8 d.	704
Grace Ella	Bedford	3 b.	339
Harriet Jane	Malton	9 d.	406
Harriet Jane	Chertsey	2 a.	41
Harry	Stockport	8 a.	5
Helen Frances	Hereford	6 a.	525
Henrietta	Wrexham	11 b.	333
Henry	Bury	8 c.	481
Henry	Leigh	8 c.	280
Henry	St. Saviour	1 d.	130
Henry	Leeds	9 b.	560
Henry	Lambeth	1 d.	429
Henry	Lewes	2 b.	190
Henry	Bethnal Green	1 c.	191
Henry Charles	Shoreditch	1 c.	156
Henry John	W. Derby	8 b.	42
Herbert	Upton	6 c.	341
Herbert John	S. Molton	5 b.	467
Herbert Squire	Birkenhead	8 a.	482
Hugh Palfreyman C.	Sheffield	9 c.	452
Isabella	Kendal	10 b.	707
Isabella	Lonsdale	5 e.	753
James	Caistor	7 a.	660
James	Bourn	7 a.	369
James	Wakefield	9 c.	94
James	Mansfield	7 b.	69
James	Haslingden	8 c.	148
James	Thakeham	2 b.	340
James Arthur	Norwich	4 b.	113
James Edward	Haslingden	8 c.	192
James Henry	St. Geo. H. Sq.	1 a.	399
James Richard	Haslingden	8 c.	160
James William T.	Paneras	1 b.	65
Jane Alice M.	Thakeham	2 b.	335
Jane Brown	Newcastle T.	10 b.	133
Janet	Ashton	8 d.	461
Jesse	Epsom	2 a.	9
Jessie	Bolton	8 c.	417
Jessie Adelaide	Basingstoke	2 e.	189
Jessie Arlet	Fulham	1 a.	243
John	Sunderland	10 a.	659
John	Gateshead	10 a.	838
John	Wigan	8 c.	43
John	mbeth	1 d.	413
John	Blackburn	8 c.	447
John	Fylde	8 c.	691
John James	Haslingden	1 a.	134
John Robert	Dudley	6 c.	128
John Stephen	Kensington	1 a.	7
John Thompson W.	Wigton	10 b.	517
John William	Wandsworth	1 d.	725
Joseph	Hayfield	7 b.	769
Joseph	Chesterfield	10 b.	625
Joseph	Newcastle T.	10 b.	73
Joseph	Holborn	1 b.	718
Joseph Edward	Holborn	1 b.	171
Joseph James	Alverstone	2 b.	530
Joseph John	Carlisle	10 b.	489
Josiah	Haslingden	8 c.	144
Kate	Hastings	2 b.	37
Kate Annie	Portsea	2 b.	429
Kate Mary	Greenwich	1 d.	354
King	Widley	4 b.	111
Laura Rebecca	Norwich	4 b.	136
Leah	Fylde	8 c.	676
Leah	Birmingham	6 d.	40
Leonard	Nantwich	8 a.	351
Lilian Florence E.	St. Geo. H. Sq.	1 a.	443
Lillis Rebekah	Salford	9 d.	130
Lily	S. St. George	2 c.	70
Lily Elfred	Watford	3 c.	427
Louisa Mary	Davertry	3 b.	109
Louisa Alice	Guildford	2 a.	81
Louisa Mabel A.	Gloucester	6 a.	297
Lucy	Sheffield	9 c.	449
Margaret Alice	Haslingden	8 c.	183
Margaret Ann	Liverpool	8 b.	194
Margaret Ann	Wigan	8 c.	35
Margaret Elizabeth	Cockermouth	10 b.	537
Margaret Ellen	Bolton	8 c.	324
Marion Elsie	Highworth	5 a.	31
Mary Alice	Pocklington	9 d.	74
Mary Ann	Newport. M.	11 a.	231
Mary Ann	Sheffield	9 c.	484
Mary Ann	Newark	7 b.	382
Mary Cunliffe	Haslingden	8 c.	184
Mary Elda G.	Ilalington	1 b.	454
Mary Elizabeth	Stoke T.	6 b.	226
Mary Ellen	Warrington	8 c.	210
Mary Jane	Tynemouth	10 b.	298
Mary Jane	Guildford	2 a.	61
Mary Sandham	Cockermouth	10 b.	555
Maudie Mary	Romford	4 a.	199
Minnie	Auckland	10 a.	256
Norman	Hayfield	7 b.	785
Norman Barclay	W. Derby	8 b.	603
Oscar	Linton	3 b.	529
Percy	Edmonton	3 a.	194
Percy	Malling	2 a.	543
Phillip	Bramley	9 b.	431

Name	District	Vol.	Page
BARNES, Polly	Forehoe	4 b.	183
Rebecca	Sunderland	10 a.	670
Reginald Heber	W. Derby	8 b.	287
Reuben	Salford	8 d.	24
Richard	Preston	8 c.	644
Richard	Bethnal Green	1 c.	268
Richard Cornelius	Totnes	5 b.	194
Richard Horace	St. Neot's	3 b.	314
Robert	Manchester	8 d.	252
Robert	Haalingden	8 c.	196
Robert	W. Ashford	2 a.	717
Robert	Skirlaugh	9 d.	322
Robert George	Poplar	1 c.	737
Robert Marshall	Holbeach	7 a.	413
Rose Ellen	Hedley W.	2 c.	183
Rose Emily	Birmingham	6 d.	119
Rosina	Holborn	1 b.	725
Ruth	Kingston	2 a.	284
Samuel	Aston	6 d.	359
Samuel Luke	Melton M.	7 a.	314
Sarah	Liverpool	8 b.	182
Sarah	Bioldfield	8 b.	204
Sarah Anne	St. George	1 d.	293
Sarah Annie B.	Malmesbury	5 a.	47
Sarah Ellen	Salford	8 d.	168
Sarah Hannah	Rochdale	8 c.	91
Selina	Bethnal Green	1 c.	253
Selina Eliza	Lambeth	1 d.	442
Susan	Preston	8 c.	519
Susan Mary	Brentford	3 a.	66
Susanna	Barbury	3 a.	774
Susanna	Bourn	7 a.	369
Theresa	Shoreditch	1 c.	74
Thomas	Northwich	8 a.	290
Thomas	W. Bromwich	6 b.	856
Thomas	Wigan	8 c.	4
Thomas	Romsey	2 c.	79
Thomas Arthur	Chertsey	8 c.	528
Thomas Edwin	Haslingden	8 c.	164
Tom	Wilton	5 a.	209
Victoria Eliza L.	Dorchester	9 c.	711
Wallis John H.	Dorchester	5 a.	340
Walter	Devises	5 a.	103
Walter	Burnley	8 c.	257
Walter	Sculcoates	9 d.	294
Walter George F.	Poole	5 a.	292
Walter Henry	Davertry	3 b.	113
Walter James	Frome	5 c.	491
Walter James	Halifax	9 a.	486
Walter John	Stoke T.	6 b.	245
Walter Sydney	Ilalington	1 b.	454
Wilfred John	Henley	3 a.	628
William	Sunderland	10 a.	599
William	Redruth	5 c.	249
William	Wigan	8 c.	183
William	W. Derby	8 b.	405
William	Cockermouth	10 b.	574
William	Leeds	9 b.	556
William	Manchester	8 d.	189
William	W. Ham	4 a.	9
William	Steyning	2 b.	293
William Albert	Marylebone	1 a.	528
William Arthur	King's N.	6 c.	428
William Brown	Chertsey	7 b.	218
William Charles	Shepton M.	5 c.	513
William Haworth	Manchester	8 d.	287
William Henry	Prestwich	8 d.	368
William Henry	Highworth	5 a.	3
William Henry	Kensington	1 a.	14
William Henry P.	Southampton	2 c.	21
William James	Preston	8 b.	704
William James	Newport P.	3 a.	601
William John	Poplar	1 c.	713
William Joseph	Medway	2 a.	533
William Lenning	Wycombe	3 a.	533
William Standford	Paneras	1 b.	175
William Thomas	Carlisle	10 b.	470
William Webster	Belper	7 b.	567
BARNBY, George	Chelsea	1 c.	324
BARNBY, Anne	Whitechapel	1 b.	1838
Albert	Hartlepool	10 a.	145
Albert Charles D.	Chippenhams	5 a.	65
Alfred	Milton	2 a.	838
Alfred Thomas	St. Geo. H. Sq.	1 a.	423
Alfred	Easthamstead	2 c.	423
Alice Jessie	Edmonton	3 a.	247
Alice Willts	Edmonton	6 b.	457
Arcelia	Windsor	2 c.	437
Amy Gertrude	Coventry	6 d.	533
Ann Elizabeth	Settle	9 a.	16
Arthur	Hambleton	2 a.	141
Arthur John	Ilalington	1 b.	289
Benjamin Marks	Whitechapel	1 c.	367
Bertram Raymond F.	Highworth	5 a.	31
Charles	Barford	2 a.	404
Charles Edward	Brighton	2 b.	204
Charlotte	Spalding	7 a.	390
Clara Rosa	Ledbury	6 a.	471
David	Birkenhead	8 a.	493
Dorah	Birmingham	6 d.	91
Dorothy Sarah	Coasdale	6 b.	323
Edith Agnes	Ilalington	1 b.	401
Edith Annie	Rugby	6 d.	575
Edith Annie	Sevenoaks	2 a.	567
Edith Florence	Ilalington	1 b.	357
Edward	Staines	3 a.	10
Edward St. John	Southampton	2 c.	5
Edythe Alice	Ilalington	1 b.	309
Eleanor	Dunbridge	2 a.	605
Eliza Amy	Bromley	2 a.	361
Eliza Jane	Ilalington	1 b.	290
Elizabeth	Ilalington	1 b.	297
Elizabeth Emily	Cardiff	11 a.	261
Elizabeth Sarah	Bakewell	7 b.	725
Ella	Widley	5 c.	683
Ellenot	Nottingham	7 b.	357
Emily Eliza	St. Geo. H. Sq.	1 a.	467
Fanny	King's N.	6 c.	498
Fanny	Ashborne	7 b.	599
Florence	Petersfield	2 c.	136
Florence Alice	Bromley	2 a.	361
Francis	Newent	6 a.	277
Frank	Shiffnal	6 a.	642
Frederick	Bethnal Green	1 c.	214

Name	District	Vol.	Page
BARNETT, Frederick John	Tamworth	6 b.	433
George	Birmingham	6 d.	130
George Edward	Leek	6 b.	297
George Henry	Sleaford	7 a.	485
Georgina	Marlbro'	5 a.	88
Gilbert	Radford	7 b.	256
Hannah Margaret	Whitby	9 d.	483
Harold Harry	Watford	3 a.	427
Harriet Hannah	Ashborne	7 b.	608
Harriet	Newcastle T.	10 b.	96
Harry	Holbeck	9 b.	371
Henry John	Staines	3 a.	11
Herbert	Ashton	8 d.	582
James	Congleton	8 a.	309
James	Stockport	8 a.	64
James	Kidderminster	6 c.	263
James Henry	Macclesfield	8 a.	128
James William	Ashby Z.	7 a.	119
Jane	Mill End	1 c.	563
John	Burton	6 b.	391
John	Bolton	8 c.	351
John Albert	Frome	5 c.	504
John Charles	Whitchurch	10 a.	225
John Douglas	Pembroke	11 a.	883
John Edwin	Birmingham	6 d.	117
John Harold	Wolstanton	6 b.	135
John Thomas F.	St. Olave	1 d.	310
Joseph	Durham	10 a.	401
Joseph	Sevenoaks	2 a.	577
Joseph	Faversham	2 a.	816
Joseph	Auckland	10 a.	225
Leah	Hackney	1 b.	519
Lizzie Ada	Hendon	3 a.	137
Louisa	Holborn	1 b.	794
Lucy	Nantwich	8 a.	366
Lucy Martha	Farnham	2 a.	127
Lydia Ann	Merthyr T.	11 a.	486
Margaret Elizabeth	Corwen	11 b.	393
Mary	Mt. Drayton	2 a.	174
Mary	Loughbro'	7 a.	143
Mary	Paneras	1 b.	143
Mary Ann	Blaby	7 a.	38
Mary Ann	Wolverhampton	6 b.	603
Mary Ann	Mill End	1 c.	517
Mary Ethel	W. Bromwich	6 b.	767
Minnie Louisa	Hendon	3 a.	130
Miriam Maria	Lichfield	6 a.	464
Mosa Victor	Ilalington	1 b.	411
Philip Saul	Paneras	1 b.	105
Rhoda	Salford	8 d.	178
Rhoda Ann	Driffeld	9 d.	331
Richard Oldroyd	Dewsbury	9 b.	782
Robert Stephen	Sevenoaks	2 a.	571
Rose Ellen	Wolverhampton	6 b.	598
Samuel	Amesbury	3 a.	175
Samuel	King's N.	6 c.	467
Samuel	Wigan	8 c.	89
Sarah Ann	Loughbro'	7 a.	143
Septus George W.	S. Stoneham	2 c.	65
Sidney Charles	Woolwich	1 d.	1099
Thomas	Mt. Drayton	6 a.	777
Thomas	Evesham	6 c.	358
Thomas	Wolverhampton	6 b.	630
Thomas	Fines Alesand	7 a.	499
Walter	Lutterworth	7 a.	4
Walter Harry	Marlbro'	5 a.	90
William	Nantwich	8 a.	313
William	W. Bromwich	6 b.	818
William	Wolverhampton	6 b.	632
William	Edmonton	3 a.	246
William	Wigan	8 c.	467
William	Prestwich	8 d.	376
William George	Whitchurch. H.	2 c.	207
William Henry	Spalding	7 a.	390
William Henry	Gloucester	6 a.	301
William James	Birmingham	6 d.	173
William Thomas	Wolverhampton	6 b.	541
Male	Whitchurch. H.	2 c.	205
Male	Leeds	9 b.	585
Female	Ashby Z.	7 a.	10
BARNY, Emily Charlotte	Darford	2 a.	415
BARNFATHER, Elizabeth	Tynemouth	10 b.	178
Emily Jane	Kensington	1 a.	191
Robert	Gateshead	10 a.	813
Sarah Elizabeth	W. Derby	8 b.	323
Thomas	Durham	10 a.	412
BARNFIELD, Alice	Marlbro'	5 a.	88
Ann	Staines	3 a.	9
BARNHAM, Arthur	Depwade	4 a.	240
BARNHILL, John Arthur	Blackburn	8 b.	407
BARNHOUSE, Frances Maria	Barnstable	5 e.	475
BARNI, Frederic Devoto B.	Bristol	6 a.	47
BARNICKLE, Mary	Cleobury M.	6 a.	616
BARNICLE, John Denis	Liverpool	8 c.	121
BARNICOFT, Ernest Crumpler	Portsea	2 b.	463
BARNICUT, Angelina	Likard	5 c.	59
BARNISH, Mabel Jane	Rochdale	8 c.	43
Sarah Ann	Bury	8 c.	539
BARNIS, Ada	Shoreditch	1 c.	159
Alexine Mary	Solihull	6 d.	598
Grace			



The undermentioned Houses are situate within the Boundaries of the

59 Page 1

Civil Parish [or Township] of	City or Municipal Borough of	Municipal Ward of	Parliamentary Borough of	Town of Village or Hamlet of	Urban Sanitary District of	Rural Sanitary District of	Eccelesiastical Parish or District of					
Haslingden	-	-	-	Haslingden	Haslingden	-	St James Haslingden					
No. of Schedule	ROAD, STREET, &c., and No. or NAME of HOUSE	HOUSES		NAME and Surname of each Person	RELATION to Head of Family	CON-DITION as to Marriage	AGE last Birthday of		Rank, Profession, or OCCUPATION	WHERE BORN		(1) Deaf-and-Dumb (2) Blind (3) Imbecile or Idiot (4) Lunatic
		In-habit-ed	Un-in-habit-ed (U.) or Building (B)				Males	Females				
1	Swineherd Lane	1		John Bart.	Head	Mar	24		Farmer (of 20 1/2 acres)	Yorkshire		
				Betty Do	Wife	Mar	32		Farmer's Wife.	Do		
				John G. Do	Son	Unm	7 Mo			Lancashire Haslingden		
2	Gold Wells	1		John Meant	Head	Mar	31		Plasterer	Lancashire Haslingden		
				Elizabeth A. Meant	Wife	Mar	29			Do	Do	
				John R. Do	Son	Unm	7			Do	Do	
				Elizabeth Do	Sister	Unm	2			Do	Do	
				Frank Do	Son	Unm	2 Mo			Do	Do	
3	Do Do	1		Jane Cochevill	Head	W	54		Farmer (of 29 acres)	Lancashire Haslingden		
				Daniel Do	Son	Unm	14		Servant	Do	Do	
				Alice A Do	Daughter	Unm	17		Sch Teacher	Do	Do	
				Rachel B Do	Daughter	Unm	14		Servant	Do	Do	
				Margaret Whimsey	Adopted child	Unm	4		Schooler	Do	Do	
4	Do Do	1		James Woods	Head	Mar	32		Cotton Weaver	Do	Do	
				Ellen Do	Wife	Mar	31			Do	Rawtenstall	
				Ellen Do	Daughter	Unm	12		Do Do	Do	Haslingden	
	Do Do		1U									
5	Higher Barn	1		George Barnes	Head	Mar	39		Farmer (of 19 ac.)	Do	Do	
				Ellen Do	Wife	Mar	36			Do	Blackburn	
				George W Do	Son	Unm	14		Cotton Warehouse Man	Do	Haslingden	
				John H Do	Son	Unm	13		Baker	Do	Do	
				Sarah J Do	Daughter	Unm	11		Schooler	Do	Do	
				Martha A Do	Daughter	Unm	8		Do	Do	Do	
				Margaret A Do	Daughter	Unm	8		Do	Do	Do	
				Jaluy Do	Son	Unm	5		Do	Do	Do	
5	Total of Houses...	5	1U	Total of Males and Females...			11	13				

NOTE.—Draw the pen through such of the words of the headings as are inappropriate.

24

Eng— Sheet H.

PUBLIC RECORD OFFICE						Reference:—
1	2	3	4	5	6	RG 11 / 4137
						COPYRIGHT PHOTOGRAPH - NOT TO BE REPRODUCED PHOTOGRAPHICALLY WITHOUT PERMISSION OF THE PUBLIC RECORD OFFICE, LONDON

The 1881 Census showing the Barnes family at Higher Barn, Haslingden - (page 1/2)

RG 11 / 4137 / Folio 51 / Page 1 / Sch. 5

The undermentioned Houses are situate within the Boundaries of the

Page 2]		The undermentioned Houses are situate within the Boundaries of the							Ecclesiastical Parish or District of		
Civil Parish [or Township] of	City or Municipal Borough of	Municipal Ward of	Parliamentary Borough of	Town or Village or Hamlet of	Urban Sanitary District of	Rural Sanitary District of	Ecclesiastical Parish or District of		St. James Haslingden		
No. of Schedule	ROAD, STREET, &c., and No. or NAME of HOUSE	HOUSES		NAME and Surname of each Person	RELATION to Head of Family	CON-DITION as to Marriage	AGE last Birthday of		Rank, Profession, or OCCUPATION	WHERE BORN	I (1) Deaf-and-Dumb (2) Blind (3) Imbecile or Idiot (4) Lunatic
		In-habit-ed	Un-in-habit-ed (U.) or Building (B.)				Males	Females			
	Higher Barn			Annie Barnes	Daue	Unm	5		Scholar	Lancashire Haslingden	
				Thomas & Do	Son	Unm	3			Do Do	
				Albert Do	Son	Unm	1			Do Do	
6	Moor Lane	1		Benjamin Walsh	Head	Mar	40		Farmer of 20 Acres	Do Musbury	
				Mary A Do	Wife	Mar	39			Do Inwell Vale	
				Alexander Do	Son	Unm	13		Cotton Weaver	Do Haslingden	
				Betty Do	Daue	Unm	12		Do Do	Do Coekham	
				Joseph Do	Son	Unm	10		Scholar	Do Do	
				Benjamin Do	Son	Unm	5		Do	Do Moor Lane	
				Alexander Teerfull	Grandfather	Wid	79			Gotland	
7	High Coekham	1		Alfred Whitecock	Head	Mar	33		Farm Bailiff of 24 Acres	Lancashire Gotherdale	
				Thannah Do	Wife	Mar	35			Do Pace Gate	
				Fred Do	Son	Unm	7			Lancashire Chorley	
				Arthur Do	Son	Unm	6			Do Accrington	
				William Do	Son	Unm	1			Do Haslingden	
				James & Do	Son	Unm	31/4			Do Do	
8	Jumble Holes Bar	1		Thomas Hindle	Head	Unm	33		Coal Miner	Do Oswaldkirk	
				John Do	Brother	Unm	27		Do Do	Do Do	
				Edward Do	Brother	Unm	26		Do Do	Do Do	
				James Do	Brother	Unm	21		Do Do	Do Do	
9	Round Hill	1		Ann Woods	Head	W	63		House Wife	Lancashire Haslingden	
				Susannah Lonsdale	Daue	Mar	27		Cotton Weaver	Do Do	
				Sarah & Holden	Daue	Mar	26		Do Do	Do Do	
				Eda Lonsdale	Grand	Unm	7		Scholar	Do Do	
				Albert & Do	Grandson	Unm	4			Do Do	
4	Total of Houses...	4		Total of Males and Females...			17	8			

NOTE.—Draw the pen through such of the words of the headings as are inappropriate.

PUBLIC RECORD OFFICE						Reference:-
1	2	3	4	5	6	
						RG 11 / 4137

COPYRIGHT PHOTOGRAPH - NOT TO BE REPRODUCED PHOTOGRAPHICALLY WITHOUT PERMISSION OF THE PUBLIC RECORD OFFICE, LONDON

The remainder of the Barnes family - Page 2/2  
 RG 11 / 4137 / Folio 51 / Page 2 / Sch. 5



The undermentioned Houses are situate within the Boundaries of the

Civil Parish [or Township] of		Municipal Borough of		Municipal Ward of	Parliamentary Borough of	Town or Village or Hamlet of	Urban Sanitary District of	Rural Sanitary District of	Ecclesiastical Parish or District of	
Accrington		Accrington		St. Paul's		Accrington	Accrington		St. James	
No. of Schedule	ROAD, STREET, &c., and No. or NAME of HOUSE	HOUSES		NAME and Surname of each Person	RELATION to Head of Family	CON-DITION as to Marriage	AGE last Birthday of	Rank, Profession, or OCCUPATION	WHERE BORN	If (1) Deaf-and-Dumb (2) Blind (3) Imbecile or Idiot (4) Lunatic
		In-habit-ed	Un-in-habit-ed (U.) or Building (B.)							
172	Friar Hill			Jane Butler	Daughter	Unm.	26	Cotton Weaver	Lancashire Accrington	
				Elyahell	"	"	27	"	"	
173	do	1		Henry Fattersell	Servant	"	16	Farm Servant	"	
				Jane Maden	Head	"	50	Farm of 13 Acres employman	Hawthorn	
				Betty	Wife	"	55	Farmers Wife	"	
				Ellen A.	Boarder	"	41	Servant	Oswaldtwistle	
				Ormerod Clay	Servant	"	20	Farm " in door	"	
174	do	1		John Woods	Head	Mar	39	Farm of 20 Acres	Hawthorn	
				Ann	Wife	"	40	" Wife	"	
				Margaret	Daughter	"	14	" Daughter	Ireland	
175	do	1		James Harrocks	Head	Unm.	40	Farm of 30 Acres employman	Lancashire Accrington	
				William H.	Son	Mar	28	Farmers Son	"	
				Betta	Son	Wife	4	Servant	"	
				James	Grandson	"	15	Wg	"	
176	New Houses	1		John Spencer	Head	Mar	27	Coal Miner	"	
				Thabias	Wife	"	28	" Wife	"	
				Hillian	Son	"	15	Schooler	"	
				Mary A.	Daughter	"	1	"	"	
177	do	1		John Maden	Head	Mar	36	Labourer (Coal Miner)	"	
				Ann	Wife	"	32	" Wife	"	
				Alice J.	Daughter	"	10	Schooler	"	
				Mary E.	"	"	8	"	"	
				Sarah	"	"	6	"	"	
				John	Son	"	4	"	Accrington	
5	Total of Houses...	5	11	Total of Males and Females...			11	13		

NOTE.—Draw the pen through such of the words of the headings as are inappropriate.

PUBLIC RECORD OFFICE						Reference:-	COPYRIGHT PHOTOGRAPH - NOT TO BE REPRODUCED PHOTOGRAPHICALLY WITHOUT PERMISSION OF THE PUBLIC RECORD OFFICE, LONDON
1	2	3	4	5	6	RG 11 / 4144	
		1		2			

The 1881 Census shows Ellan Ann MADEN with her uncle & aunt at Friar Hill, Baxenden R G 11 / 4144 / Folio 45 / Page 36 / Sch. 173



The undermentioned Houses are situate within the Boundaries of the

119 [Page 19]

Civil Parish [or Township] of	City or Municipal Borough of	Municipal Ward of	Parliamentary Borough of	Town or Village or Hamlet of	Urban Sanitary District of	Rural Sanitary District of	Eccelesiastical Parish or District of		
Oswaldtwistle					Oswaldtwistle		Emanuel		
No. of Schedule	ROAD, STREET, &c., and No. or NAME of HOUSE	HOUSES Inhabited (U), or building (B)	NAME and Surname of each Person	RELATION to Head of Family	CON-DITION as to Marriage	AGE last Birthday of Males Females	Rank, Profession, or OCCUPATION	WHERE BORN	II (1) Deaf-and-Dumb (2) Blind (3) Imbecile or Idiot (4) Lunatic
	Cockersby Fold		Dinah Riley	Sister	Unm	26	Cotton Weaver	Lancashire Oswaldtwistle	
			Ellen Entwistle	Niece	Unm	14	Cotton Weaver	do Oswaldtwistle	
97	do	1	John Wright	Head	Mar	21	Coal Miner	Lancashire Harwood	
			Mary Ellen Wright	Wife	Mar	18	Cotton Weaver	do Oswaldtwistle	
98	do	1	Edwards Wright	Head	Mar	26	Barter	do Oswaldtwistle	
			Mary Ellen do	Wife	Mar	25	Cotton Weaver	do Oswaldtwistle	
			Tomlinson do	Son	Mar	3		do Oswaldtwistle	
99	Lettice Farm	1	James Maden	Head	Mar	29	Farmer of 110 acres employ- ing one man.	Lancashire Oswaldtwistle	
			Betty						
			Betty Maden	Wife	Mar	30	Farmer's Wife	Lancashire Oswaldtwistle	
			Bella do	Daughter		8	Scholar	do Oswaldtwistle	
			Lettice do	Daughter		7	do	do Oswaldtwistle	
			Jane Alice do	Daughter		6	do	do Oswaldtwistle	
			Clara do	Daughter		5	do	do Oswaldtwistle	
			Mary do	Daughter		4	do	do Oswaldtwistle	
			Frank Greenbrook	Serv	Unm	19	Farm Servant	do Liverpool	
100	Lettice	1	John Walsh	Head	Mar	51	General Laborer	do Oswaldtwistle	
			Henry do	Son	Unm	19	Cartman's Laborer	do Oswaldtwistle	
			Elizabeth do	do	Unm	14	Cotton Weaver	do Oswaldtwistle	
			Lettice do	Daughter	Unm	29	Housekeeper	do Oswaldtwistle	
			Anna do	Daughter	Unm	25	Cotton Weaver	do Oswaldtwistle	
			Ellen do	Daughter	Unm	23	Cotton Weaver	do Oswaldtwistle	
101	Sullivan Row	1	George Holden	Head	Mar	57	Coal Miner	do Blackburn	
			Lettice Holden	Wife	Mar	59		do Oswaldtwistle	
			Henry Holden	Son	Unm	22	Coal Miner	do Oswaldtwistle	
5	Total of Houses...	5					Total of Males and Females...	10 14	

NOTE.—Draw the pen through such of the words of the headings as are inappropriate.

Eng— Sheet C.

PUBLIC RECORD OFFICE						Reference:—
1	2	3	4	5	6	
		1		2		RG 11 / 4201

COPYRIGHT PHOTOGRAPH - NOT TO BE REPRODUCED PHOTOGRAPHICALLY WITHOUT PERMISSION OF THE PUBLIC RECORD OFFICE, LONDON

The 1881 Census showing the other members of the Maden family at Lettice Farm, Oswaldtwistle  
 RG 11 / 4201 / Folio 119 / Page 19 / Sch. 99



Administrative County of Lancaster					The undermentioned Houses are situate within the Boundaries of the						Page 52						
Civil Parish		Municipal Borough		Municipal Ward		Urban Sanitary District		Town or Village or Hamlet		Rural Sanitary District		Parliamentary Borough or Division		Ecclesiastical Parish or District			
of Haslingden				of Grims		of Haslingden						of Rossendale		of St James			
Col. 1	2	3 4 5		6		7		8 9 10		11		12	13	14	15		16
No. of Schedule	ROAD, STREET, &c., and No. or NAME of HOUSE	Inhabited (U) or Building (B)	Uninhabited (U) or Building (B)	Number of rooms (if less than five)	NAME and Surname of each Person	RELATION to Head of Family	CON. DITION as to Marriage	AGE last Birthday of	Male	Female	PROFESSION or OCCUPATION	Employed	Employed	Number of Employers	WHERE BORN		(1) Deaf-and-Dumb (2) Blind (3) Lunatic, Imbecile or Idiot
23	Swineherd Lane	1			George Slatts	Hb	M	35			Mason		X		Rawtenstall Lancaster		
					Mary A. Do.	Wife	M	34							Do Do		
					Fred Do.	Son		10			Scholar				Do Do		
					Susan J. Do.	Daughter		8			Do				Do Do		
					George H. Do.	Son		6mo							Haslingden Do		
24		1			John W. Holden	Head	M	38			Farmer	X			Ormskirk Do		
					Ann Do.	Wife	M	29							Aughton Do		
					Jane Do.	Daughter		5							Haslingden Do		
					Alice C. Do.	Daughter		3							Haslingden Do		
25	Sunny field road	1			Jonas Cornshaw	Head	M	58			Farmer	X			Fulstow Roughton		
					Elizabeth Do.	Wife	M	56							Do Do		
					Wilson Do.	Son	S	23			Cotton Weaver		X		Do Do		
					Ruth K. Do.	Daughter	S	20					X		Do Do		
					John W. Do.	Son	S	19			Farm Labourer		X		Do Do		
26	2	1			James Hartley	Head	M	30			Joiner		X		Lancashire Haslingden		
					Alice A. Do.	Wife	M	29							Do Do		
					Arthur Do.	Son		4							Do Do		
27	3	1			Daniel Crockett	Head	M	29			Farm Bailiff	X			Do Do		
					Ellen Do.	Wife	M	29							Do Rising Bridge		
					Esther Do.	Daughter		3							Do Haslingden		
					Wilfred Do.	Son		X							Do Do		
28	4	1			Jane Crockett	Head	Wid	65			Farmer		X		Do Do		
					Rachel B. Do.	Daughter	S	24			Employed at home		X		Do Do		
29	Higher Barn	1			George Barnes	Head	M	49			Farmer		X		Do Do		
					Ellen Do.	Wife	M	46							Do Do		
					Lamb J. Do.	Daughter	S	21			Cotton Weaver		X		Do Do		
					Margaret A. Do.	Daughter	S	18			Do		X		Do Do		
					Jabez Do.	Son		15			Do		X		Do Do		
					Ann Do.	Daughter		15			Do		X		Do Do		
	Total of Houses and of Tenements with less than Five Rooms ...	7	22	2	Total of Males and Females...				13	16							

NOTE.—Draw the pen through such of the words of the headings as are inappropriate.

PUBLIC RECORD OFFICE

Reference:- **RG12/3353**

COPYRIGHT - NOT TO BE REPRODUCED PHOTOGRAPHICALLY WITHOUT PERMISSION

The 1891 Census showing the Barnes family residing at Higher Barn, Haslingden - (page 1/2)  
 RG 12 / 3353 / Folio 52 / Page 5 / Sch. 29

Administrative County of <u>Lancaster</u>			The undermentioned Houses are situate within the Boundaries of the								Page <u>6</u>				
Civil Parish		Municipal Borough		Municipal Ward		Urban Sanitary District		Town or Village or Hamlet		Rural Sanitary District		Parliamentary Borough or Division		Ecclesiastical Parish or District	
of <u>Hastings Ave</u>		of <u>None</u>		of <u>None</u>		of <u>Hastings Ave</u>		of <u>None</u>		of <u>None</u>		of <u>Rosendale</u>		of <u>St James</u>	
1	2	3	4	5	6	7	8	9	10	11	12	13	14	15	16
No. of Schedule	ROAD, STREET, &c, and No. or NAME OF HOUSE	HOUSES Inhabited (1) or Building (2)	Uninhabited (1) or Building (2)	Number of rooms occupied if less than five	NAME and Surname of each Person	RELATION to Head of Family	CON-DITION as to Marriage	AGE last Birthday of	PROFESSION or OCCUPATION	Employer	Employed	Where BORN	(1) Deaf-and-Dumb (2) Blind (3) Lunatic, Imbecile or Idiot		
30	Moor Lane	1	//	H	Thomas E Barnes	Son		13	Farm Labourer		X	Lancashire Haslingden			
					Albert Do	Son		11	Cotton Weaver		X	Do Do			
					Herbert Do	Son		9	Scholar			Do Do			
					Mary E Do	Daughter		7	Do			Do Do			
					Bertha Do	Daughter		4	Do			Do Do			
					Matthew Bell	Head	M	46	Farmer		X	Yorkshire Gilsburn			
					Ann Do	Wife	M	45	Do			Do Do			
					Margaret Do	Daughter	S	20	Cotton Weaver		X	Do Do			
					William Do	Son	S	18	Farm Labourer		X	Do Do			
					Agnes A Do	Daughter		14	Do		X	Do Do			
	Mary Metcalf	Servant		14	Domestic			Do Do							
31	Moor Gate High Cockham	1	//	H	Hamnah Whitlock	Head	Wid	45	Farmer		X	Do Pace Gate			
					Fred Do	Son	S	19	Farm Labourer		X	Lancashire Chorley			
					Arthur Do	Son	S	16	Cotton Weaver		X	Do Accrington			
					William Do	Son		11	Scholar			Do Haslingden			
					Jamies E Do	Son		10	Do			Do Do			
					Henry Do	Son		5	Do			Do Do			
32	Jumble Hole Bar	1	//	H	Henry Holland	Head	M	54	General Labourer		X	Do Crawshawbooth			
					Elizabeth D Do	Wife	M	57	Housekeeper			Do Do			
					Alfred Do	Son	S	25	Coal Miner		X	Do Rawtenstall			
33	4 Carr Gate	1	//	H	Thomas Maden	Head	M	35	Cotton Weaver		X	Do Haslingden			
					Sarah A Do	Wife	M	35	Do			Do Newchurch			
					John R Do	Son		14	Do		X	Do Haslingden			
					Amelia A Do	Daughter		7	Scholar			Do Do			
					Whitaker Do	Son		4	Do			Do Do			
					Elizabeth Do	Daughter		2	Do			Do Do			
34	2 Carr Gate	1	//	H	Mary Leach	Head	Wid	60	Cotton Winder		X	Do Manchester			
					Elizabeth A Do	Daughter	S	30	Cotton Weaver		X	Do Haslingden			
					Edmund Do	Son	S	21	Do		X	Do Do			
Total of Houses and of Tenements with less than Five Rooms ...		5	1/2	4	Total of Males and Females...			16	13						

NOTE.—Draw the pen through such of the words of the headings as are inappropriate.

Reference:-

**RG12/3353**

COPYRIGHT - NOT TO BE REPRODUCED PHOTOGRAPHICALLY WITHOUT PERMISSION

the remainder of the Barnes Family RG 12/ 3353 / Folio 52 / Page 6 /Sch. 29 – (page 2 / 2)



Administrative County of <u>Lancaster</u>				The undermentioned Houses are situate within the Boundaries of the						Page 6						
Civil Parish		Municipal Borough		Municipal Ward		Urban Sanitary District		Town or Village or Hamlet		Rural Sanitary District		Parliamentary Borough or Division		Ecclesiastical Parish or District		
of <u>Accrington</u>		of <u>Accrington</u>		of <u>South West</u>		of <u>Accrington</u>		of _____		of _____		of <u>Accrington</u>		of <u>St. James</u>		
1	2	3	4	5	6	7	8	9	10	11	12	13	14	15		16
No. of Schedule	ROAD, STREET, &c., and No. or NAME of HOUSE	Inhabited	Un-occupied	Number of rooms occupied if less than five	NAME and Surname of each Person	RELATION to Head of Family	CON-DITION as to Marriage	AGE last Birthday of	PROFESSION or OCCUPATION	Employer	Employed	Number of Birthdays	WHERE BORN	If (1) Deaf-and-Dumb (2) Blind (3) Lunatic, Imbecile or Idiot		
33	56 Friar Hill	1			Martha Riley	Widow	S	78	Living on her own means				Lancaster Oswaldtwistle			
					James Barnes	Head	M	63	Living on his own means				Do Haslingden			
					Lawrence Do	Son	S	22	Coal Miner		X		Do Accrington			
					Thomas L. Do	Son	S	24	Do		X		Do Do			
					Samuel Do	Son	S	16	Do		X		Do Do			
					Robert Do	Son	S	18	Do		X		Do Do			
34	33 1/2 Top of Meadow	1			John Crook	Head	M	46	Farmer			X	Do Do			
					Sarah Do	Wife	M	48	Do				Do Oswaldtwistle			
					John Do	Son	S	16	Father's Apprentice		X		Do Do			
					Jacob L. Do	Son	S	13	Farmer Assistant		X		Do Do			
					George Do	Son	S	4	Scholar				Do Do			
					Mary Ann Do	Daughter	S	10	Do				Do Do			
					James Do	Son	S	7	Do				Do Do			
					Sarah Do	Daughter	S	5	Do				Do Do			
35	203 Meadow North	1			Edward Litchbottom	Head	M	33	Farmer and Cotton weaver		X		Do Haslingden			
					Mary Ann Do	Wife	M	28	Do				Do Accrington			
					Mary Alice Do	Daughter	S	6	Do				Do Do			
					Maggie Do	Daughter	S	4	Do				Do Do			
36	Friar Hill	1			James Maden	Head	M	60	Farmer and Butcher	X			Do Haslingden			
					Betty Do	Wife	M	65	Do				Do Longton			
					Ellen Ann Do	Niece	S	24	Widow		X		Do Oswaldtwistle			
					Ellie Do	Niece	S	13	Scholar				Do Do			
					Henry Do	Nephew	S	10	Farmer Servant		X		Do Church			
37	Friar Hill	1			Thomas Hordley	Head	M	43	Coal Miner		X		Do Oswaldtwistle			
					Martha Do	Wife	M	44	Do				Do Accrington			
					William Thos. Do	Son	S	7	Scholar				Do Do			
					John Sat. Do	Son	S	6	Do				Do Haslingden			
					Edwards Do	Son	S	4	Do				Do Do			
					Mary Do	Daughter	S	3	Do				Do Accrington			
38	Do	1			Edwards Hordley	Head	S	33	Coal Miner		X		Do Oswaldtwistle			
6	Total of Houses and of Tenements with less than Five Rooms ...	6		3	Total of Males and Females...				18	12						

NOTE.—Draw the pen through such of the words of the headings as are inappropriate.

PUBLIC RECORD OFFICE					
Reference:-	RG12/3358				
COPYRIGHT - NOT TO BE REPRODUCED PHOTOGRAPHICALLY WITHOUT PERMISSION					

The 1891 Census with Ellen Ann still residing with her uncle's family at Friar Hill, Accrington  
 RG 12 / 3358 / Folio 100 / Page 5 / Sch. 36

Administrative County of <u>LANCASTER</u>					The undermentioned Houses are situate within the Boundaries of the					Page 23						
Civil Parish		Municipal Borough		Municipal Ward		Urban Sanitary District		Town or Village or Hamlet		Rural Sanitary District		Parliamentary Borough or Division		Ecclesiastical Parish or District		
of <u>Accrington</u>		of <u>Accrington</u>		of <u>South West</u>		of <u>Accrington</u>		of		of		of <u>Accrington</u>		of <u>Saint Peters</u>		
1	2	3	4	5	6	7	8	9	10	11	12	13	14	15	16	
No. of Schedule	ROAD, STREET, &c., and No. or NAME of HOUSE	HOUSES Inhabited (U.) or Building (B.)	Number of rooms occupied (U.) or built (B.)	NAME and Surname of each Person	RELATION to Head of Family	CON-DITION as to Marriage	AGE last Birthday of	PROFESSION or OCCUPATION		Employed	Employed	Where BORN	IF (1) Deaf-and-Dumb (2) Blind (3) Lame, Imbecile or Idiot			
144	18 Richmond Hill	1		Robert Blundell	Head	M	48	Cabinet Maker			X	LANCASTER, ACCRINGTON				
				Nancy do	Wife	M	44					do				
				John do	Son	S	23	Joiner			X	do				
				Alice do	Daughter	S	21	Cotton Weavers			X	do				
				Robert do	Son	S	20	Joiner			X	do				
				Harry do	Son	S	18	Iron Moulder			X	do				
				William do	Son	S	16	Machine Fitter			X	do				
				Bertha do	Daughter		14	Cotton Weaver			X	do				
				Lizzie do	Daughter		10	Scholar				do				
				Frank do	Son		7	Scholar				do				
				Nancy do	Daughter		5	Scholar				do				
145	20 do	1		William Rigby	Head	M	31	Tin Plate Worker			X	do		Preston		
				Mary do	Wife	M	33					do		do		
				Albert do	Son		8	Scholar				do		Accrington		
				Thomas do	Son		6	Scholar				do		do		
				Mary Alice do	Daughter		4					do		do		
				Ann do	Daughter		10					do		do		
				Isabella Birtwistle	Sister-in-law	S	23	Cotton Weaver			X	do		do		
				Elizabeth A do	Sister-in-law	S	18	Cotton Weaver			X	do		do		
				Lilly do	Sister-in-law	S	16	Cotton Weaver			X	do		do		
				Elizabeth Standring	Boarder	S	22	Cotton Weaver			X	do		do		
146	22 do	1		James Maden	Head	M	39	Labourer in Ironworks			X	do		Oswaldtwistle		
				Betty do	Wife	M	40					do		Accrington		
				Elizabeth do	Daughter	S	18	Cotton Weaver			X	do		Oswaldtwistle		
				Lettice do	Daughter	S	17	Dressmaker's Apprentice			X	do		do		
				Jane Alice do	Daughter	S	16	Cotton Weaver			X	do		do		
				Clara do	Daughter		14	Cotton Weaver			X	do		do		
				Edith do	Daughter		10	Scholar				do		do		
				Maggie do	Daughter		9	Scholar				do		do		
				Edith do	Daughter		7	Scholar				do		do		
				Minnie do	Daughter		2					do		Newchurch		
3	Total of Houses and of Tenements with less than Five Rooms ...	3		Total of Males and Females...				10	21							

Notes—Draw the pen through such of the words of the headings as are inappropriate.

PUBLIC RECORD OFFICE					
Reference:-	RG12/3358				
COPYRIGHT - NOT TO BE REPRODUCED PHOTOGRAPHICALLY WITHOUT PERMISSION					

The 1891 Census shows the remainder of the Maden family at 22 Richmond Hill, Accrington  
 RG 12 / 3358 / Folio 38 / Page 23 / Sch. 146



*The Parish of Oswaldtwistle  
in the County of  
-- Lancashire --*

There was 1 match for this search!

Baptism: 4 Dec 1870 Immanuel, Oswaldtwistle, Lancashire, England

Ellen Ann Maden - Daughter of James Maden & Betty

Born: 26 Oct 1870

Abode: Gaulkthorn

Occupation: Farmer

Baptised by: James Young Curate

Register: Baptisms 1866 - 1880, Page 79, Entry 508

Source: LDS Film 1470816-7-5

[www.lan-opc.org.uk/cgi-bin/mkindx.cgi?parish=Rosendale&type=Township&community=Haslingden](http://www.lan-opc.org.uk/cgi-bin/mkindx.cgi?parish=Rosendale&type=Township&community=Haslingden)



In the results below, the reference number will be a link. Clicking on this link will add your choice to a summary list on a new page. From this [summary page](#) you will be able to review all your search results and you will find links to printable application forms which can be used to order the certificate for the index entry. Full details of the charges and the Register Office address can be found on the form.

### Lancashire Marriage indexes for the years: 1896

Surname	Forename(s)	Surname	Forename(s)	Church / Register Office	Registers At	Reference
BARNES	Thomas Edwin	MADEN	Ellen Ann	Baxenden, St John	Preston	<a href="#">CE12/1/127</a>

**Total records matching : 1**

If you haven't found the **BARNES** that you're looking for, it may be that the indexes for your area of interest have not been transcribed yet. See our [coverage page](#) for more information.

Where the first surname is a web link followed by an asterisk (\*), it signifies that there are alternative entries in the database for this reference number. Click on the surname to display the full list of alternatives and an explanation of why this occurs.

**Many other** counties have their BMD indexes on-line. If you can't find the entry in this area, perhaps you could try a neighbouring area. See the **Local BMD** section of Information regarding the purchase of certificates can be found in the [Marriages Information](#) page.



Click on the appropriate reference number in the tables above to add your choice to your [summary page](#). From the summary page you will be able to review all your search choices and print off application forms to order copy certificates.

**NOTE:** Each Region's Register Office has a different address. Please be sure to send your application to the correct office, otherwise your application may be rejected. The appropriate address will be found near the bottom of the application form.

# Lancashire BMD

Births, Marriages and Deaths on the Internet

In the results below, the reference number will be a link. Clicking on this link will add your choice to a summary list on a new page. From this [summary page](#) you will be able to review all your search results and you will find links to printable application forms which can be used to order the certificate for the index entry. Full details of the charges and the Register Office address can be found on the form.

## Lancashire Birth indexes for the years: 1896

Surname	Forename(s)	Sub-District	Registers At	Mother's Maiden Name	Reference
BARNES	James Albert	Accrington	Preston	MADEN	<a href="#">ACC/91/59</a>

## Lancashire Birth indexes for the years: 1897

Surname	Forename(s)	Sub-District	Registers At	Mother's Maiden Name	Reference
BARNES	Bessie Maden	Accrington	Preston	MADEN	<a href="#">ACC/94/22</a>

## Lancashire Birth indexes for the years: 1901

Surname	Forename(s)	Sub-District	Registers At	Mother's Maiden Name	Reference
BARNES	George Edwin	Accrington	Preston	MADEN	<a href="#">ACC/101/31</a>

## Lancashire Birth indexes for the years: 1902

Surname	Forename(s)	Sub-District	Registers At	Mother's Maiden Name	Reference
BARNES	William Smith	Accrington	Preston	MADEN	<a href="#">ACC/103/17</a>

## Lancashire Birth indexes for the years: 1905

Surname	Forename(s)	Sub-District	Registers At	Mother's Maiden Name	Reference
BARNES	Constance Mary	Accrington	Preston	MADEN	<a href="#">ACC/110/76</a>

### Total records matching : 5.

If you haven't found the **BARNES** that you're looking for, it may be that the indexes for your area of interest have not been transcribed yet. See our [coverage](#) page for more information.

Many other counties have their BMD indexes on-line. If you can't find the entry in this area, perhaps you could try a neighbouring area. See the **Local BMD** section of Information regarding the purchase of certificates can be found in the [Birth Information](#) page.



© 2013

### **N.B.**

**Note that there are five children listed here born to the Barnes/Maden family, but on the 1911 Census, Ellen Ann states that only three children had been born to this marriage up to that time, so there is a possibility that two of these children are not of this Barnes family. Further verifications will therefore have to be made.**

**James and George are listed on the 1901 Census as residing with Thomas Edwin and Ellen Ann at Friar Hill Farm.**

The following are selected parts of documents showing Thomas Edwin and Ellen Ann BARNES in the purchase and acquisition of the property known as "Greendale", Drumacre Road East, Longton, in 1908 until 1918, when she disposed of the property after the death of her husband and son and would have been the home of Private James Barnes when he went to war.

Dated 31<sup>st</sup> July 1908.

Mr. Henry Kippax.

to  
Mr. T. E. and Mrs. E. A. Barnes.

## Conveyance

of a freehold plot of land dwellinghouse  
and premises situate in Longton near  
Preston in the County of Lancaster. —  
— Consideration £1800. —

£9  
Coak and Talbot.  
Southport. 40



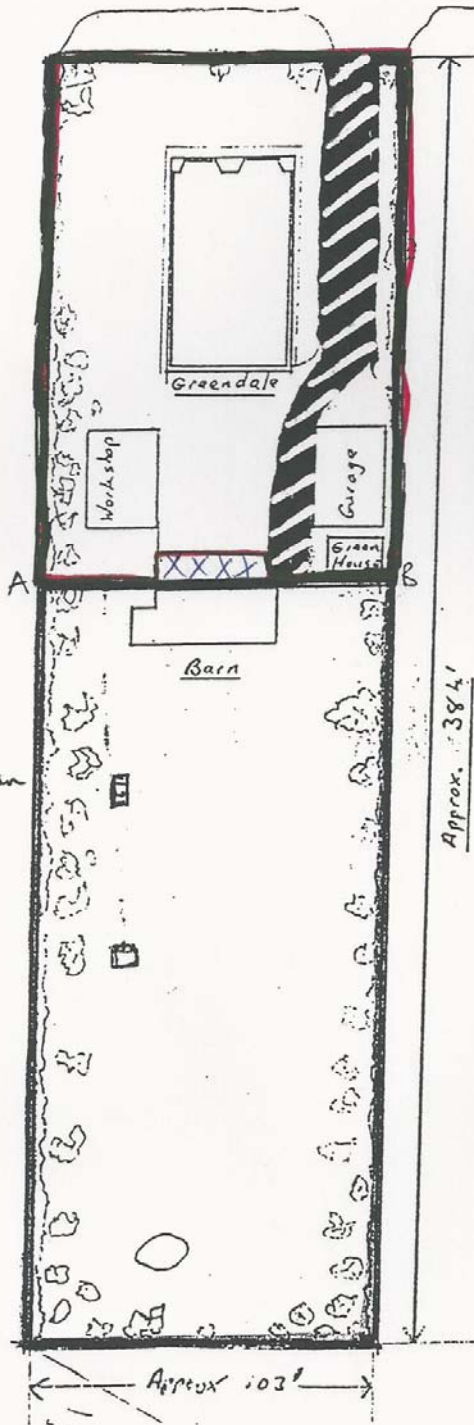
Existing plan of 'Greendale'

Land outlined in blue - To be retained

Burnt land outlined in red to be sold

mate  
1000 - 2 ft.

Drumacre Lane east



new sewage system

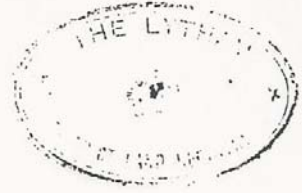
septic tank  
extra filter

Approx. 384'

Approx. 103'

K.W. Learning

Office



57 97

# This Indenture

M made the  
5 First



day of  
August One thousand nine hundred and eight  
**Between** Thomas Edwin Barnes  
Market Gardener and Ellen Ann Barnes  
his Wife both of Longton near Preston in the County  
of Lancaster (hereinafter called the Mortgagors) of  
the one part and Harry Kippax of Southport  
in the <sup>said</sup> County of Lancaster (gentleman (hereinafter  
called the Mortgage) of the other part **Whereas**  
by an Indenture dated the thirty first day of July  
One thousand nine hundred and eight and made  
between the Mortgage of the one part and the  
Mortgagors of the other part All that field or  
close of meadow land (being the field or close  
referred to as number 639 in the Schedule to an  
Indenture dated the eighteenth day of October One  
thousand eight hundred and sixty six and made  
between Edward Joseph Wild and Reginald Joseph  
Wild of the one part and William Fowler of the  
other part) situate on the South side of and fronting  
to Drummere Lane and on the West side of and  
fronting to Six Acre Lane in Longton aforesaid  
containing eight acres one rood and thirty seven perches  
statute measure or thereabouts and late in the occupation





THIS INDENTURE made the *thirteenth* day of *July* " One thousand nine hundred and twelve BETWEEN THOMAS EDWIN BARNES Market Gardener and ELLEN ANN BARNES his Wife both of Longton near Preston in the County of Lancaster (hereinafter referred to as "the Mortgagors") of the one part and the said ELLEN ANN BARNES, ISAAC DOWNHAM of The Vicarage Baxenden in the said County Clerk in Holy Orders and JOHN SPENCER of Higher Barn Farm Haslingden in the said County Farmer (hereinafter referred to as "the Mortgagees") of the other part WHEREAS under and by virtue of a Conveyance on Sale dated the thirty first day of July One thousand nine hundred and eight made between Henry Kippax of the one part and the Mortgagors of the other part the Mortgagors are seised in fee simple free from incumbrances of the hereditaments hereinafter described and expressed to be hereby conveyed AND WHEREAS the Mortgagees have agreed to lend to the Mortgagors the sum of One thousand four hundred pounds upon having the repayment thereof with interest secured in manner hereinafter appearing NOW THIS INDENTURE WITNESSETH that in pursuance of the said agreement and in consideration of the sum of ONE THOUSAND FOUR HUNDRED POUNDS already paid by the Mortgagees out of moneys belonging to them on a joint account to the Mortgagors (the receipt whereof the Mortgagors do hereby respectively acknowledge) The Mortgagors hereby jointly and severally covenant with the Mortgagees to repay to them the said sum of One thousand four hundred pounds on the fourth day of January next Together with interest thereon in the meantime at the rate of Four pounds per centum per annum And further that if any principal money shall remain owing



LOW & SONS, LIMITED,  
LONDON WALL,  
LONDON.



# This Indenture

made the *second* day of *March* One thousand nine hundred and eighteen BETWEEN WALTER PHILLIPS of Southport in the County of Lancaster Market Gardener (hereinafter referred to as "the Mortgagor") of the one part and ELLEN ANN BARNES of Accrington in the said County Widow (hereinafter referred to as "the Mortgagee") of the other part WHEREAS the Mortgagor is seized of or entitled to the hereditaments and premises hereinafter described and intended to be hereby conveyed for an estate in fee simple subject as hereinafter mentioned free from incumbrances AND WHEREAS the Mortgagee has agreed to lend to the Mortgagor the sum of Eight hundred and fifty pounds on having the repayment thereof together with interest thereon secured as and in manner hereinafter appearing NOW THIS INDENTURE WITNESSETH that in pursuance of the said agreement and in consideration of the sum of EIGHT HUNDRED AND FIFTY POUNDS to the Mortgagor this day paid by the Mortgagee (the receipt whereof the Mortgagor hereby acknowledges) The Mortgagor hereby covenants with the Mortgagee to pay to her on the *first* day of *September* next the said sum of Eight hundred and fifty pounds with interest thereon in the meantime after such a rate as shall after deduction of income tax thereon be equal to a rate of Five pounds per centum per annum AND ALSO so long after that day as any principal money remains due under these presents to pay to the Mortgagee interest thereon at the rate aforesaid by equal half-yearly payments on the *first* day of *March* and the *first* day of *September* respectively AND THIS INDENTURE ALSO WITNESSETH that in further pursuance of the said agreement and in consideration of the premises the Mortgagor as beneficial owner hereby conveys unto the Mortgagee A L L that field or close of meadow land (being the field or close referred to as Number 639 in the Schedule to an Indenture dated the eighteenth day of October One thousand eight hundred and sixty six and made between Edward Joseph Weld and Reginald Joseph Weld of the one part and William Fowler of the other part) situate on the south side of and fronting to Drumacre Lane and on the west side of and fronting to Six Acre Lane in Longton



ABSTRACT OF THE WILL DEATH AND

PROBATE OF THE WILL of Ellen Ann

Barnes deceased

30th June 1950

BY WILL of this date Ellen Ann Barnes then of 35 Ramsbottom Street Accrington

*Examined will  
original at our office  
On 14<sup>th</sup> day of January  
1955.*

in the County of Lancaster Widow appointed her nephew Walter Maden Hall to be

*Simpson, Arkwright,  
Solicitors,  
2, Cannon St.  
Accrington*

the Executor and Trustee thereof

10th May 1953 -

DEATH of the said Ellen Ann Barnes at 85 Westwood Street Accrington

aforesaid

13th June 1953

PROBATE OF THE WILL of the said Ellen Ann Barnes deceased was granted this day

out of the Principal Probate Registry of her Majesty's High Court of Justice to

the said Walter Maden Hall of 30 Thanet Court Queens Drive Ealing Middlesex

Deputy Borough Treasurer nephew of the deceased and the sole executor named in the

said Will

ABSTRACT OF THE TITLE relating to freehold premises  
situate in and known as "Greendale" Drumacre Lane  
Longton Near Preston.

1st March 1918  
Stamps £18.10.0.  
& P.D.

*Examined and the  
original of the  
of Brightons Solicitors  
Southport this 31st July 1918  
Walter Rowland O'Keefe  
Solicitor  
Preston*

INDRE of that dt made between ELLEN ANN BARNES of Accrington in the Coy of Lancs. Widow  
(Vdor) (1) and WALTER PHILLIPS of Southport in the sd Coy Market Gardener (Pchsr) (2)

RECITING by an Indre of Mtge dated 13th July 1912 md btwn Thomas Edwin Barnes of  
Longton in the sd Coy of Lancs Market Gardener and his wife the Vdor (joint  
owners of the hereditis and prems thrinars descdbd) of the one part and the  
Vdor Isaac Downham and John Spencer (thrinar referred to as "the Mtgees") of  
the or pt For the considerations thrin mentd the sd Thos. E. Barnes as beneficial  
owner so far as regarded one undivided moiety throf and the Vdor as beneficial  
owner so far as regarded the other undivided moiety throf thrby conveyd the  
hereditis and prems thrinar partcly descdbd and inttd to be thrby conveyd unto and  
to the use of the Mtgees in fee simple subj to the proviso for redemption and  
the covts condons and declons thrin contnd c

AND RECITING the sd Thos. E. Barnes died on the 16th November 1917 leaving the  
Vdor him surviving who thrupon became seised of the entirety of the sd hereditis  
and prems as surviving joint tenant subj to the thrinbfc recited Indre

AND RECITING by an Indre dated the 28th day of Feb 1918 md btwn the Mtgees of the  
one pt and the Vdor of the or pt in conson of theppal monies and intt secured  
by the before recited Indre having been pd the Mtgees thrby conveyd and released  
the sd hereditis and prems unto the Vdor in fee simple freed and discharged  
from the thrinbefore recited Indre and all ppal monies and intt secured thrby

**I am indebted to Mr. & Mrs. M. Eagleton for copies of the above documents**



Faberstown Kimpton  
53 Probate London 21  
a Randall (wife of  
Freda Allan Howard  
orge Love).

**BARNES** Ellen of 31 Hunters Grove Swindon Wiltshire  
spinster died 20 September 1953 at St. Margarets  
Hospital Stratton St. Margaret Wiltshire Probate  
Gloucester 1 December to Walter Henry Ralph retired  
rivetter. Effects £788 2s.

**BARNES** Emily Louise of 13d Errol-  
(wife of Henry Sidney Barnes)  
at St. Georges-in-the-East Hosp-  
istration London 7 January to  
chief inspector C.I.D. Effects £:

**BARNES.**

**BARNES** Ellen Ann of 85 Westwood-street Accrington widow  
died 10 May 1953 Probate London 13 June to Walter  
Maden Hall deputy treasurer. Effects £622 13s. 2d.

**BARNES** Emma of 2 Gibson-road Fc  
(wife of Robert Edward Barnes)  
at The City Hospital North Nott  
Nottingham 11 November to th  
Barnes retired warehouse clerk.

-terrace Blacko near  
ecember 1952 Probate  
es cashier.

**BARNES** Ellen of 31 Hunters Grove Swindon Wiltshire  
spinster died 30 November 1952 at The County  
Hospital Huntingdon Probate London 19 January to  
Grace Iris Ebling widow. Effects £1298 13s. 5d.

**BARNES** Emma Elizabeth of 174 Caps  
widow died 9 July 1953 Probate  
Muriel Laird married woman. Ef

d Hindsford Atherton  
s) died 28 December  
February to the said  
s £940 5s.

**BARNES** Ellen Florence of 63 Bembrook-road Hastings widow  
died 4 August 1953 at St. Helens Hospital Hastings  
Administration Lewes 24 October to Phillip William  
Barnes general labourer. Effects £459 12s. 6d.

**BARNES** Emma Lucy of 2 South  
London widow died 3 December  
January to Frank William Barne  
Effects £2627 14s. 8d.

t Tingley Yorkshire  
t St. James Hospital  
25 March to Eliza  
. 4d.

**BARNES** Ellen Matilda of 48 Thornton-avenue West Croydon  
Surrey widow died 30 May 1953 Probate London 14 August  
to Reginald John Wills nurseryman and William Charles  
Gilbert Barnes foreman carpenter.  
Effects £1016 12s. 9d

**BARNES** Emmeline of 64 Dongola-r  
N.15 widow died 2 August 1953  
Hospital Tottenham Administrat  
to Ada Bessie Dennis married w  
Effects £213 11s. 2d.

**Probate record of Ellen Ann BARNES**



**Friar Hill Farm, Roundhill Road, Haslingden BB5 3SW  
now undergoing an extensive period of re-furbishment in December 2013,  
by the current owner, left at the apex of the scaffolding,  
after a period of years in dereliction.**



Administrative County		The undermentioned Houses are situate within the boundaries of the													Page 39	
Civil Parish		Ecclesiastical Parish		County Borough, Municipal Borough, or Urban District		Ward of Municipal Borough or of Urban District		Rural District		Parliamentary Borough or Division		Town or Village or Hamlet				
of <i>Accrington</i>		of <i>St. Paul's Baptist</i>		of <i>Accrington</i>		of <i>South West part</i>		of <i>J</i>		of <i>Accrington</i>		of <i>J</i>				
No. of Schedules	ROAD, STREET, &c. and No. or NAME of HOUSE	Inhabited	Uninhabited	Number of Rooms occupied if less than 5	Name and Surname of each Person	RELATION to Head of Family	Condition as to Marriage	Age last Birthday	PROFESSION OR OCCUPATION	Employer, Worker, or Own account	If Working at Home	WHERE BORN	(1) Deaf and Dumb (2) Blind (3) Lunatic (4) Imbecile, feeble-minded			
1	2	3	4	5	6	7	8	9	10	11	12	13	14	15	16	17
								Males	Females							
	13 Bridge Houses				Frederick J. Paltold	Son	S	9		At School		Lanc <sup>s</sup> Baxenden				
					Edith	Daughter	S	6				Lanc <sup>s</sup> Baxenden				
20	14	1			William D <sup>o</sup>	Son	S	4				Lanc <sup>s</sup> Baxenden				
21	15	1			George Northover	Head	S	43		Cotton <sup>James</sup> Worker		Sorsetshire	✓			
					Frank Hitchen	Head	M	29		Railway Porter		Lanc <sup>s</sup> Stakeshead				
					Annie E.	Wife	M	30			At Home	Shropshire	✓			
					Frank	Son	S	2				Lanc <sup>s</sup> Stakeshead				
					Laura	Daughter	S	1				Lanc <sup>s</sup> Baxenden				
22	16	1			Thomas Partridge	Head	Wid <sup>r</sup>	36		Brick Burner	Worker	Lanc <sup>s</sup> Barrow on Furness				
					Samuel	Son	S	10		At School		Burnley				
					Thomas H.	Son	S	9				Bury				
					John	Son	S	7				Burnley				
					Benjamin	Son	S	5				Baxenden				
					Catherine	Daughter	S	5				Baxenden				
					Lily	Cousin	S	18		Housekeeper	at Home	Worcestershire	✓			
23	Sweet Clough Farms	1			Wilson Clegg	Head	M	51		Joiner	Employed	Lanc <sup>s</sup> Baxenden				
					Eleanor	Wife	M	56			at Home	Accrington				
					Agnes M.	Daughter	S	26				Baxenden				
					John W.	Son	S	22		Cotton Worker	Worker	Baxenden				
					James T.	Son	S	30		Farm Worker	Worker	Baxenden				
					Jane E.	Daughter	S	18		Cotton Dresser		Baxenden				
					Ellen H.	Daughter	S	16		Cotton Weaver		Baxenden				
					Riley	Son	S	14		App. Printer		Baxenden				
					George	Son	S	11		at School		Baxenden				
					Harry	Son	S	9				Baxenden				
24	Sweet Clough Cottage	1			William Bolton	Head	Wid <sup>r</sup>	64		Gardener	Worker	Lanc <sup>s</sup> Preston				
					Elyzabeth A.	Daughter	S	25		Yarn Winder		Baxenden				
					Horace	Daughter	S	22		Picker		Baxenden				
					Catherine	Daughter	S	20		Cotton Weaver		Baxenden				
					Thomas	Son	S	18		Wick Labourer		Baxenden				
25	Friar Hill Farm	1			James Maden	Head	Wid <sup>r</sup>	70		Farmer & Dealer	Employed	Haslingden				
6	Total of Schedules of Houses and of Tenements with less than Five Rooms	6		3	Total of Males and of Females..			19	12							

NOTE—Draw your pen through such words of the headings as are inapplicable.

PUBLIC RECORD OFFICE

REFERENCE :-

RG 13 / 3859

REPRODUCTION MAY INFRINGE COPYRIGHT-THE COPYRIGHT OFFICER WILL ADVISE

CM SCALE

1 2 3 4 5 6

The 1901 Census showing Barnes's uncle (by marriage) as 'Head' at Friar Hill Farm, Baxenden  
 RG 13 / 3859 / Folio 163 / Page 39 / Sch. 25



Administrative County		The undermentioned Houses are situate within the boundaries of the															Page 40		
Civil Parish		Ecclesiastical Parish			County Borough, Municipal Borough, or Urban District		Ward of Municipal Borough or of Urban District		Rural District		Parliamentary Borough or Division		Town or Village or Hamlet						
of Accrington		of St John the Baptist			of Accrington		of South (part of)		of		of Accrington		of						
1	2	3			4	5	6	7	8	9	10	11	12	13	14	15	16	17	
No. of Schedules	ROAD, STREET &c. and No. of NAME of HOUSE	HOUSES			Name and Surname of each Person	RELATION to Head of Family	Condition of Marriage	Age last Birthday of		PROFESSION OR OCCUPATION	Employer, Worker, or Own account	If Working at Home	WHERE BORN	If					
		Inhabited	Uninhabited	Building				Males	Females					(1) Deaf and Dumb	(2) Blind				
	Friar Hill Farm				Thomas E. Barnes	Serv	M	24		Farm Servant	Worker		Lanc <sup>s</sup> Haslingden						
					Ellen A. S.	Niece	M	30		Housekeeper		At Home	Lanc <sup>s</sup> Oswaldtwistle						
					James A. S.	Gr. Nephew	S	4					Lanc <sup>s</sup> Baxenden						
					George E. S.	Son	S	3 1/2					Lanc <sup>s</sup> Baxenden						
26	Newhouse 1				Samuel Foulds	Serv	M	14		Farm Servant	Worker		Lanc <sup>s</sup> Accrington						
					Andrew Haslellan	Head	M	27		Yard (Presses) Cotton			Scotland						
					Alice A. S.	Wife	M	26				At Home	Lanc <sup>s</sup> Haslingden						
27	2 S.	1			George Parker	Head	M	60		Ironer	Worker	At Home	Lanc <sup>s</sup> Accrington						
					Hanny S.	Wife	M	50				At Home	Lanc <sup>s</sup> Haslingden						
28	3 S.	1			George Jakes	Head	M	29		Butcher	Worker		Lanc <sup>s</sup> Baxenden						
					Betsy S.	Wife	M	31				At Home	Lanc <sup>s</sup> Haslingden						
					Margaret A. S.	Serv	S	2					Lanc <sup>s</sup> Baxenden						
29	Spitting Farm 1				John Spence	Head	M	47		Farm	Owner		Lanc <sup>s</sup> Manchester						
					Jane S.	Wife	M	44				At Home	Lanc <sup>s</sup> Baxenden						
					Mary J. S.	Serv	S	21					Lanc <sup>s</sup> Baxenden						
					Alice Ward	Visitor	M	53		Living on own Means			Lanc <sup>s</sup> Haslingden						
30	Farther Friar Hill Farm 1				Jacob Howth	Head	M	36		Harper	Employed		Lanc <sup>s</sup> Oswaldtwistle						
					Alice S.	Wife	M	36				At Home	Lanc <sup>s</sup> Baxenden						
					Mary S.	Serv	S	15		At School			Lanc <sup>s</sup> Baxenden						
					Alice S.	Serv	S	9					Lanc <sup>s</sup> Baxenden						
31	S. Cottage 1				John Clayton	Head	Wid	56		Blacksmith	Worker		Lanc <sup>s</sup> Burnley						
					Betsy S.	Serv	S	18		Cotton Weaver			Lanc <sup>s</sup> Haslingden						
					Agnes S.	Serv	S	12		At School			Lanc <sup>s</sup> Baxenden						
					Coal Mine & Cattle Barns														
					End of the Ecclesiastical Parish of St John the Baptist														
10	Total of Schedules of Houses and of Tenements with less than Five Rooms	10		4	Total of Males and of Females...					10	13								

NOTE—Draw your pen through such words of the headings as are inapplicable.

PUBLIC RECORD OFFICE

REFERENCE :-

RG 13 / 3859

REPRODUCTION MAY INFRINGE COPYRIGHT-THE COPYRIGHT OFFICER WILL ADVISE

CM SCALE

1 2 3 4 5 6

The 1901 Census showing the Barnes family at (uncle's) Friar Hill Farm, Baxenden  
 RG 13 / 3859 / Folio 163 / Page 40 / Sch. 25

Administrative County <u>Lancashire</u>		The undermentioned Houses are situate within the boundaries of the													Page 17
Civil Parish		Ecclesiastical Parish		County-Borough, Municipal Borough, or Urban-District		Ward of Municipal Borough or Urban-District		Rural District		Parliamentary Borough or Division		Town or Village or Hamlet			
of <u>Accrington par.</u>		of <u>St. Peter's par.</u>		of <u>Accrington</u>		of <u>Sancti West, par.</u>		of		of <u>Accrington par.</u>		of			
No. of Schedule	ROAD, STREET, &c. and No. or NAME of HOUSE	In Habited	Uninhabited	No. of Rooms	Name and Surname of each Person	RELATION to Head of Family	Condition as to Marriage	Age last Birthday of	PROFESSION OR OCCUPATION	Employer, Worker, or Own account	If Working at Home	WHERE BORN	(1) Deaf and Dumb (2) Blind (3) Lunatic (4) Imbecile, feeble-minded		
102	59, Richmond St	1			Betty Maden	Head	Wid	50				Lanc. Accrington			
					Jane Do	Daughter	S	26	Boston Warrington	Worker		Do Do			
					Mary Do	do	S	23				Do Do			
					Hester Do	do	S	20	Boston Warrington	Do		Do Do			
					Maggie Do	do	S	19	Do Do	Do		Do Do			
					Edith Do	do	S	17	Do Do	Do		Do Do			
					Minnie Do	do	S	12				Do Do			
102	99 Do	1			John W Taylor	Head	M	30	Iron Turner Machine	Do		Do Accrington			
					Emma Do	Wife	M	25				Do Accrington			
					Harold Do	Son	S	5				Do Accrington			
					Walter Do	Son	S	4				Do Do			
					Agnes Do	Son	S	2				Do Do			
					Edith Do	Daughter	S	3 Mo				Do Do			
104	92 Do	1			Thomas Whitaker	Head	M	30	Plate Printer	Do		Do Accrington			
					Ann Do	Wife	M	31	Boston Warrington	Do		Do Accrington			
					Thomas Do	Son	S	5				Do Accrington			
					William Do	Son	S	3				Do Accrington			
					Elizabeth Pilkington	Niece	Wid	75				Do Do			
105	35 Do	1			William S. Smith	Head	M	42	Iron Turner Machine	Do		Birmingham	✓		
					Mary Ann Do	Wife	M	37				Sheshie Longleton	✓		
					Mary E Do	Daughter	S	14	Boston Warrington	Do		Lanc. Accrington			
					Arthur Do	Daughter	S	6				Do Do			
					Thomas Do	Daughter	S	5				Do Do			
					Stephen Do	Son	S	2				Do Do			
106	97 Do	1			George W. Whitaker	Head	M	31	Machine Stoker	Worker		Do Accrington			
					Annie Do	Wife	M	20	Boston Warrington	Do		Do Manchester			
					Quinn Do	Daughter	S	2				Do Accrington			
Total of Schedules of Houses and of Tenements with less than Five Rooms		5			Total of Males and of Females...			10	14						

NOTE—Draw your pen through such words of the headings as are inapplicable.

Eng.—Sheet C.

PUBLIC RECORD OFFICE

REFERENCE :-

RG 13 / 3859

REPRODUCTION MAY INFRINGE COPYRIGHT—THE COPYRIGHT OFFICER WILL ADVISE

CM SCALE

1 2 3 4 5 6

The 1901 Census showing the MADEN family (widowed)  
 now at 89 Richmond Street, Accrington  
 RG 13 / 3859 / Folio 90 / Page 175 / Sch. 102



# CENSUS OF ENGLAND AND WALES, 1911.

Number of Schedule *102*  
(To be filled up by the Enumerator after collection.)

*Before writing on this Schedule please read the Examples and the Instructions given on the other side of the paper, as well as the headings of the Columns. The entries should be written in Ink.*

*The contents of the Schedule will be treated as confidential. Strict care will be taken that no information is disclosed with regard to individual persons. The returns are not to be used for proof of age, as in connection with Old Age Pensions, or for any other purpose than the preparation of Statistical Tables.*

NAME AND SURNAME	RELATIONSHIP to Head of Family.	AGE (Last Birthday) and SEX.		PARTICULARS as to MARRIAGE.					PROFESSION or OCCUPATION of Persons aged ten years and upwards.				BIRTHPLACE of every person.	NATIONALITY of every Person born in a Foreign Country.	INFIRMITY.	
		For Infants under one year state the age in months as "under one month," "one month," etc.	Ages of Males.	Ages of Females.	Write "Single," "Married," "Widower," or "Widow," opposite the names of all persons aged 15 years and upwards.	Completed years the present Marriage has lasted. If less than one year write "under one."	Children born alive to present Marriage. (If no children born alive write "None" in Column 7).	Total Children Born Alive.	Children still Living.	Children who have Died.	Personal Occupation.	Industry or Service with which worker is connected.				Whether Employer, Worker, or Working on Own Account.
of every Person, whether Member of Family, Visitor, Boarder, or Servant, who (1) passed the night of Sunday, April 2nd, 1911, in this dwelling and was alive at midnight, or (2) arrived in this dwelling on the morning of Monday, April 3rd, not having been enumerated elsewhere. No one else must be included. (For order of entering names see Examples on back of Schedule.)																
1.	2.	3.	4.	5.	6.	7.	8.	9.	10.	11.	12.	13.	14.	15.	16.	
1	Thomas E Barnes	Head	33		divorced	15	2	1	2	Surgery man 564	Employer		Haslingden Lane			
2	Ellen A. Barnes	wife	40	40	do	15	3	1	2				Greendale Lane			
3	James Elliot Barnes	son	14							At school 390			Beccenden			
4																
5																
6																
7																
8																
9																
10																
11																
12																
13																
14																
15																

<p style="text-align: center;">(To be filled up by the Enumerator.)</p> <p>I certify that—                  (1) All the ages on this Schedule are entered in the proper sex columns.                  (2) I have counted the males and females in Columns 3 and 4 separately, and have compared their sum with the total number of persons.                  (3) After making the necessary enquiries I have completed all entries on the Schedule which appeared to be defective, and have corrected such as appeared to be erroneous.</p> <p style="text-align: right;">Initials of Enumerator <i>R.B.</i></p>	<p style="text-align: center;">(To be filled up by, or on behalf of, the Head of Family or other person in occupation, or in charge, of this dwelling.)</p> <p>Write below the Number of Rooms in this Dwelling (House, Tenement, or Apartment). Count the kitchen as a room but do not count scullery, landing, lobby, closet, bathroom; nor warehouse, office, shop.</p> <p style="text-align: center;"><i>Six Rooms</i></p> <p>I declare that this Schedule is correctly filled up to the best of my knowledge and belief.</p> <p style="text-align: right;">Signature <i>Thomas Edwin Barnes</i>                  Postal Address <i>Greendale, Longton, Lane</i></p>
--	--

1911 Census showing the BARNES family at Greendale, Longton, RG14 – 25 – 2 – 39 – 25239 \_ 0203 \_ 03



Civil Parish.		Ecclesiastical Parish.		Borough or Urban District.						
Longton		Longton St. Andrews		Blackpool						
Word of Borough or Urban District.		Rural District.		Parliamentary Borough or Division.						
		Preston		Blackpool						
No. of Sched-ule.	Address.	Kind of Building. (For Blocks of Flats and Model Dwellings the Numbers of separate Flats or Tenements must be stated.)	Name of Occupier.	Dwellings or Tenements.				Population.		
				In-hab-ited.	Un-inhab-ited.	Build- ing.	Build- ings not used as dwell- ings.	Males.	Fe- males.	Per- sons.
1.	2.	3.	4.	5.	6.	7.	8.	9.	10.	11.
101	Moorside	Farm House	Mr Cox	1				1	3	4
102	"	Private House	" Barnes	1				2	1	3
103	"	Farm House	" Tomlinson	1				4	2	6
104	"	"	" Garry	1				2	2	4
105	"	Private House	" Wright	1				2	1	3
106	"	Farm House	" Briggs	1				2	1	3
107	Gill Lane	Private House	" Distribution	1				2	2	4
108	"	"	" Wall	1				1	1	2
109	"	"	" Gless	1				3	3	6
110	"	"	" Shaw	1				3	2	5
111	"	Farm House	" Harkland	1				1	3	4
112	No 1	Private House	" Sergeant	1				3	2	5
113	" 2	"	" Harrison	1				1	1	2
114	3	"	" Harrison	1				1	1	2
115	4	"	Miss Southam	1						
116	5	"	Mrs Bainford	1					3	3
117	6	"	Miss Houseman	1					1	1
118	7	"	Mr Sumner	1					1	2
119	8	"	" Brewcliffe	1					1	2
120	9	"	" Hart	1					3	1
121	10	"	Miss Strickland	1					1	1
122	11	"	Mr Lugh	1					1	1
123	12	"	Miss Parker	1					1	2
124	17	"	Mr Mayor	1					1	4
125	13	"	" Harrison	1					3	2
Total to be carried forward to Abstract				25				39	43	82

Civil Parish.		Ecclesiastical Parish.		Borough or Urban District.						
Longton		Longton St. Andrews		Blackpool						
Word of Borough or Urban District.		Rural District.		Parliamentary Borough or Division.						
		Preston		Blackpool						
No. of Sched-ule.	Address.	Kind of Building. (For Blocks of Flats and Model Dwellings the Numbers of separate Flats or Tenements must be stated.)	Name of Occupier.	Dwellings or Tenements.				Population.		
				In-hab-ited.	Un-inhab-ited.	Build- ing.	Build- ings not used as dwell- ings.	Males.	Fe- males.	Per- sons.
1.	2.	3.	4.	5.	6.	7.	8.	9.	10.	11.
126	No 14 Gill Lane	Private House	Mr Carr	1					2	2
127	"	"	Mr Boulton	1					1	4
128	" 19	"	" Cooke	1					4	4
129	" 16	"	" Harrison	1					6	2
130	" 13	"	" Carr	1					3	1
131	" 20	"	" Carr	1					2	2
132	Liverpool Rd	Public House	" Halkivell	1					3	3
133	"	House & Shop	" Robinson	1					3	3
134	"	"	Miss Gardner	1						3
	"	Co-operative Store	Co-operative Society				1			
135	"	Private House	Mr Hunt	1					4	5
136	"	Farm House	" Bamber	1					3	3
137	Hall Carr Lane	House & Shop	" Hunt	1					2	4
138	"	Private House	Miss Watkinson	1						5
139	"	"	Mr Dimmock	1					1	1
140	"	"	" Whittle	1					1	1
141	"	"	" Moss	1					3	2
142	"	"	" Stanley	1					4	3
143	"	"	" Hunter	1					1	4
144	"	"	" Hunt	1					1	4
145	"	"	" Chadwick	1					3	6
146	"	"	" Higham	1					3	2
147	"	"	" Higham	1					2	4
148	"	"	" Wignall	1					1	2
149	"	"	" Higham	1					2	2
Total to be carried forward to Abstract				24				1	53	66

1911 Census – Enumerator's Book – List of Addresses  
Barnes household as highlighted

# Lancashire BMD

Births, Marriages and Deaths on the Internet

In the results below, the reference number will be a link. Clicking on this link will add your choice to a summary list on a new page. From this [summary page](#) you will be able to review all your search results and you will find links to printable application forms which can be used to order the certificate for the index entry. Full details of the charges and the Register Office address can be found on the form.

<b>Lancashire Birth indexes for the years: 1870</b>					
<b>Surname</b>	<b>Forename(s)</b>	<b>Sub-District</b>	<b>Registers At</b>	<b>Mother's Maiden Name</b>	<b>Reference</b>
MADEN	Ellen Ann	Oswaldtwistle	Preston	RILEY	<a href="#">OS/29/51</a>
<b>Lancashire Birth indexes for the years: 1872</b>					
<b>Surname</b>	<b>Forename(s)</b>	<b>Sub-District</b>	<b>Registers At</b>	<b>Mother's Maiden Name</b>	<b>Reference</b>
MADEN	Betty	Accrington	Preston	RILEY	<a href="#">ACC/39/20</a>
<b>Lancashire Birth indexes for the years: 1873</b>					
<b>Surname</b>	<b>Forename(s)</b>	<b>Sub-District</b>	<b>Registers At</b>	<b>Mother's Maiden Name</b>	<b>Reference</b>
MADEN	Lettice	Oswaldtwistle	Preston	RILEY	<a href="#">OS/32/97</a>
<b>Lancashire Birth indexes for the years: 1874</b>					
<b>Surname</b>	<b>Forename(s)</b>	<b>Sub-District</b>	<b>Registers At</b>	<b>Mother's Maiden Name</b>	<b>Reference</b>
MADEN	Jane Alice	Oswaldtwistle	Preston	RILEY	<a href="#">OS/34/49</a>
<b>Lancashire Birth indexes for the years: 1876</b>					
<b>Surname</b>	<b>Forename(s)</b>	<b>Sub-District</b>	<b>Registers At</b>	<b>Mother's Maiden Name</b>	<b>Reference</b>
MADEN	Clara	Oswaldtwistle	Preston	RILEY	<a href="#">OS/36/21</a>
<b>Lancashire Birth indexes for the years: 1877</b>					
<b>Surname</b>	<b>Forename(s)</b>	<b>Sub-District</b>	<b>Registers At</b>	<b>Mother's Maiden Name</b>	<b>Reference</b>
MADEN	Mary	Oswaldtwistle	Preston	RILEY	<a href="#">OS/38/7</a>
<b>Lancashire Birth indexes for the years: 1880</b>					
<b>Surname</b>	<b>Forename(s)</b>	<b>Sub-District</b>	<b>Registers At</b>	<b>Mother's Maiden Name</b>	<b>Reference</b>
MADEN	Betty	Oswaldtwistle	Preston	RILEY	<a href="#">OS/41/88</a>
<b>Lancashire Birth indexes for the years: 1881</b>					
<b>Surname</b>	<b>Forename(s)</b>	<b>Sub-District</b>	<b>Registers At</b>	<b>Mother's Maiden Name</b>	<b>Reference</b>
MADEN	Maggie	Oswaldtwistle	Preston	RILEY	<a href="#">OS/43/47</a>
<b>Lancashire Birth indexes for the years: 1883</b>					
<b>Surname</b>	<b>Forename(s)</b>	<b>Sub-District</b>	<b>Registers At</b>	<b>Mother's Maiden Name</b>	<b>Reference</b>
MADEN	Edith	Oswaldtwistle	Preston	RILEY	<a href="#">OS/45/76</a>
<b>Lancashire Birth indexes for the years: 1888</b>					
<b>Surname</b>	<b>Forename(s)</b>	<b>Sub-District</b>	<b>Registers At</b>	<b>Mother's Maiden Name</b>	<b>Reference</b>
MADEN	Minnie	Newchurch	Preston	RILEY	<a href="#">NEW/82/54</a>

Total records matching : 10.

**No matching records were found for MADEN in the following years:**

1871, 1875, 1878, 1879, 1882, 1884, 1885, 1886, 1887, 1890, 1891, 1892, 1893, 1894, 1895, 1896, 1897, 1898, 1899, 1900

**NOTE:** Each Region's Register Office has a different address. Please be sure to send your application to the correct office, otherwise your application may be rejected.

The appropriate address will be found near the bottom of the application form.



## DEATHS REGISTERED IN OCTOBER, NOVEMBER AND DECEMBER 1917.

BAR

	Age.	District.	Vol.	Page.		Age.	District.	Vol.	Page.
Barnes, Gladys	1	Wigan	8 c	67	Barnes, Sarah J.	28	Liverpool	8 b	60
— Harold	0	Barnsley	9 c	209	— Stanley C.	2	Luton	3 b	415
— Harold C.M.	25	Edmonton	3 a	472	— Susannah	87	Woolwich	1 c	1264
— Henry	76	Neath	11 a	822	— Susannah A.	48	Wile End	1 c	400
— Herbert	62	Smallburgh	4 b	63	— Sydney C.	10	Edmonton	3 a	546
— Hilda	6	Stoke T.	6 b	245	— Theresa	0	E. Ward	10 b	771
— Iris P.	0	Lewisham	1 d	1187	— Thomas	62	Stockport	8 a	67
— James	77	Cockermouth	8 e	611	— Thomas E.	40	Ormskirk	8 b	925
— James	47	Preston	8 e	521	— Thomas F.	38	Frestwich	8 d	343
— James	62	Ashton	8 d	521	— Thomas H.	60	Spalding	7 a	398
— James	0	Burnley	8 e	243	— Thomas J.	67	W. Ham	4 a	253
— James	71	Royston	3 a	748	— Vera M.	5	Foleshill	6 d	600
— James G.H.	2	Witford	4 b	262	— Walter	2	W. Ham	4 a	90
— James G.	77	Blackburn	8 e	364	— Walter	52	Dudley	6 b	863
— James H.	65	S. Shields	10 a	899	— Walter B.	1	Mansfield	7 b	101
— Jessie M.	49	Wendsworth	1 d	603	— William	68	Leigh	8 c	252
— John	78	Newcastle T.	10 b	66	— William	0	Sunderland	10 a	692
— John	2	Ashby Z.	7 a	109	— William	67	Bingham	7 b	486
— John	35	Liverpool	8 b	87	— William	2	Bolton	8 c	323
— John	73	Salford	8 d	43	— William	74	Uxbridge	3 a	53
— John	63	W. Derby	8 b	724	— William	27	Hitchin	3 a	759
— John	93	Tonbridge	2 a	583	— William	0	Greenwich	1 d	976
— John	67	Hendon	3 a	345	— William	82	Camberwell	1 d	888
— John	0	Aston	6 d	406	— William	71	Derby	7 b	604
— John	66	Kingsclere	2 c	284	— William	70	Haslingden	8 e	108
— John	22	S. Stoneham	2 c	95	— William	73	Marylebone	1 a	564
— John C.	69	Wimborne	5 a	277	Barnet, Frederica B.	87	Kensington	1 a	147
— John H.	0	Wigan	8 c	20	— Rebecca	44	Godstone	2 a	304
— John L.	2	Steines	3 a	7	— Robert E.	3	Edmonton	3 a	518
— John W.P.	26	Bromley	2 s	672	Barnett, Ada	8	Wandsworth	1 d	697
— John W.	54	Northampton	3 b	40	— Albert	70	Bridgwater	5 c	359
— John W.C.	52	Bury	8 c	502	— Albert E.	0	Lewisham	1 d	1186
— Joseph	0	Haslingden	8 e	158	— Alfred	72	Shepton M.	5 c	493
— Joseph	61	Christchurch	2 b	854	— Alfred	34	Kuneeaton	6 d	585
— Joseph E.	29	Blackburn	8 e	358	— Ann M.	65	Wolverhampton	6 b	570
— Joseph J.	60	W. Ham	4 a	22	— Annie	36	Whitechapel	1 c	318
— Julia E.	84	Wolverhampton	6 b	514	— Arthur T.	23	Aston	6 d	465
— Leonard C.	0	Romford	4 a	484	— Beatrice	0	Christchurch	2 b	860
— Leslie	1	Pontefract	9 c	173	— Charles	33	Redruth	5 c	213
— Lily	1	Darlington	10 a	29	— Charles	83	Mansfield	7 b	90
— Louisa	62	Wetford	3 a	878	— Charles	48	Petersfield	2 c	184
— Mabel E.	24	Chesterfield	7 b	752	— Cornelius	90	Poplar	1 c	491
— Mazyrier	56	Southampton	2 c	25	— Daniel	63	Horwich	4 b	124
— Margaret A.	62	Blackburn	8 e	411	— Edward H.	0	Luton	3 b	429
— Margaret J.	0	Barrow F.	8 e	866	— Edward W.	72	Rochdale	8 e	47
— Marion	75	Prescot	8 b	858	— Eleanor E.	0	Islington	1 b	299
— Marjorie J.L.	0	Bristol	6 a	206	— Eli	54	Manmouth	11 a	26
— Martha A.	57	St. Neots	3 b	284	— Eliza	70	Edmonton	3 a	677
— Martha M.	81	W. Ham	4 a	37	— Eliza	55	Poplar	1 c	561
— Mary	78	Chorlton	8 c	809	— Elizabeth A.	64	Barton I.	8 c	540
— Mary	12	Hunslet	9 b	554	— Ellen	30	Uckfield	2 b	143
— Mary	76	Liverpool	8 b	111	— Ellen	70	Hambleton	2 a	245
— Mary A.	74	Woolwich	1 d	1246	— Emma	76	Newent	6 a	311
— Mary A.	20	Dartford	2 a	752	— Emma E.	41	Bedwellty	11 a	72
— Mary E.	22	Wigan	8 c	20	— Eric J.	4	Salford	8 d	20
— Mary E.	36	W. Ham	4 a	265	— Eugenie	61	Wandsworth	1 d	736
— Matilda	92	Barnet	3 a	428	— Florence	53	Romford	4 a	481
— Matilda	81	Greenwich	1 d	1022	— Florence B.	0	W. Ham	4 a	135
— Maud	38	Elham	2 a	1380	— George	73	Stratford	6 d	783
— Minnie	0	Bristol	6 a	120	— George	61	Horn castle	7 a	590
— Nellie R.	32	Christchurch	2 b	817	— Harriet A.	75	W. Ham	4 a	143
— Olive	0	Atherstone	6 d	556	— Harry T.	1	Birmingham	6 d	139
— Richard	74	Gateshead	10 a	1031	— Henry	0	Warrington	8 c	150
— Robert	55	Sculcoates	9 d	217	— Henry L.	34	Salford	8 d	127
— Robert	66	Milton	2 a	1210	— Jack	29	Frestwich	8 d	235
— Ronald	0	Sheffield	9 c	524	— Jacob	63	Leeds	9 b	364
— Rose	0	Brentford	3 a	235	— James	58	Peterbro	3 b	220
— Rose	38	St. Geo. East	1 c	341	— James E.	47	Bolton	8 c	407
— Samuel	54	Leicester	7 a	258	— Jane	79	Wvesham	6 c	161
— Sarah	49	Weymouth	5 a	358	— Jane	85	Narberth	11 a	1173
— Sarah	58	Barton I.	8 c	554	— John	66	Edmonton	3 a	559
— Sarah	61	Riebridge	4 a	842	— John	71	Wolverhampton	6 b	571
— Sarah	70	Hammersmith	1 a	272	— John	68	Wolverhampton	6 b	542
— Sarah A.	87	Hartlepool	10 a	147	— John	79	Dolgelly	11 b	422
— Sarah F.	1	Stepney	1 c	393	— John G.	47	Auckland	10 a	275

G.R.O. Deaths Index 4/4 1917

Thomas Edwin BARNES indicated



# BAR

## DEATHS REGISTERED IN APRIL, MAY AND JUNE, 1953.

Age.	District.	Vol.	Page.	Age.	District.	Vol.	Page.		
BARLOW, Florence R.	82	Wood Green	5 f	427	BARNARD, Rosa	83	Tonbridge	5 b	743
-- Francis	81	Stockport	10 a	525	-- Simon	81	F.of Dean	7 b	317
-- Frank	65	Manchester	10 e	12	-- William H.	77	Ware	4 b	186
-- Frederick	80	Birmingham	9 c	339	-- William T.	76	Uxbridge	5 f	114
-- George	60	Barnsley	2 b	41	BARNATT, George	73	Nottingham	3 c	359
-- Hannah	64	Bury	10 b	698	-- William J.	66	Burton	9 b	72
-- Harold C.W.	50	Chichester	5 h	447	BARNBROOK, Olive M.	28	Romford	5 a	414
-- Harry	73	Stourbridge	9 d	184	BARNDEN, Florence M.	68	Maidstone	5 b	541
-- Henry	39	Barton	10 b	258	BARNED, John	87	Littleboro'	10 d	71
-- Henry E.	38	Gainsboro'	3 b	147	-- Susan L.L.	80	Paddington	5 d	141
-- Ida D.	53	Leicester C.	3 a	426	BARNES, Ada A.	75	Solihull	9 c	819
-- Ivy M.	57	Worcester	9 d	247	-- Agnes L.	54	Fulham	5 c	433
-- James	69	Manchester	10 e	272	-- Agnes M.	58	Petersfield	6 b	334
-- Jemima E.	81	Bolton	10 b	543	-- Agnes M.	58	Surrey S.W.	5 g	737
-- John A.	62	Melton M.	3 a	682	-- Albert	68	Manchester	10 e	316
-- John A.A.	58	Ashbourne	3 a	4	-- Alexander A.	49	Barrow F.	10 b	161
-- John L.	77	Barton	10 b	239	-- Alexander H.	67	Surrey S.E.	5 g	645
-- John R.	64	Nottingham	3 c	323	-- Alfred	43	Hastings	5 h	255
-- Joseph	63	Heywood	10 c	351	-- Alfred	56	Middlesbro'	1 b	609
-- Joseph C.	78	Stockport	10 a	460	-- Alfred	78	Depwade	4 b	337
-- Joseph V.	61	Falmouth	7 a	36	-- Alfred J.	74	Hitchin	4 b	100
-- Kate A.	68	Chesterfield	3 a	118	-- Alfred J.	75	Bournmouth	6 b	106
-- Laura	68	Devon Central	7 a	292	-- Alfred N.	76	Hitchin	4 b	96
-- Levi	56	Southport	10 f	555	-- Alice	80	N.Walsham	4 b	454
-- Lily E.	83	Cardiff	8 b	79	-- Alice M.	81	Gloucester R.	7 b	391
-- Louisa	59	Manchester	10 e	397	-- Amy	69	Burnley	10 b	611
-- Lydia	84	Nottingham	3 c	342	-- Ann M.F.	67	Ince	10 c	411
-- Mabel	79	Chesterfield	3 a	81	-- Annie E.	56	Leicester C.	3 a	421
-- Maggie	57	Bucklow	10 a	132	-- Arthur	77	Basford	3 c	28
-- Margaret	69	Farnworth	10 c	152	-- Arthur	63	Manchester	10 e	94
-- Margaret	83	Sheffield	2 d	67	-- Arthur W.	65	Leicester	3 a	616
-- Nellie J.	74	Barnet	5 a	571	-- Benjamin T.	80	Bristol	7 b	91
-- Parthania	75	Farnworth	10 c	177	-- Bessie	61	Gateshead	1 a	738
-- Reginald	52	Middlesbro'	1 b	685	-- Brian	70	Burnley	10 b	635
-- Richard	61	Newton	10 f	10	-- Charles E.	0	Claro	2 c	104
-- Robert	91	Bucklow	10 a	107	-- Charles E.E.	77	Lichfield	9 b	169
-- Robert	81	Plymouth	7 a	595	-- Charles G.	57	Penzance	7 a	108
-- Rudolph	71	Sheffield	2 d	259	-- Charles I.	78	Surrey Mid.E.	5 g	170
-- Sydney	79	Stourbridge	9 d	189	-- Charlotte	76	Whitchurch	9 a	241
-- Thomas	50	Hull	2 a	252	-- Clara E.	79	Wandsworth	5 d	630
-- Thomas G.	68	Doncaster	2 b	345	-- Claude E.	70	Chippenham	7 c	336
-- William	49	Liverpool N.	10 d	176	-- David	73	Fulham	5 c	424
BARMBY, Eliza G.	83	Honiton	7 a	410	-- Dennis	83	Manchester	10 e	170
-- Myrtle H.	42	Grimsby	3 b	190	-- Edgar	47	Rotherham	2 c	545
BARNABUS, Wilhelmina	76	Ince	10 c	454	-- Edith	69	Wycombe	6 a	356
BARNABY, Henry	83	Barton	10 b	240	-- Edith A.	66	Norwich	4 b	496
-- Mary A.	84	Sheffield	2 d	282	-- Edith J.	76	Lincoln	3 b	243
BARNACLE, Annie R.	76	Leicester	3 a	588	-- Edith M.	90	Braintree	4 a	292
-- Joseph P.	37	Liverpool N.	10 d	219	-- Edith P.	67	Rochford	4 a	555
BARNARD, Alfred	81	Ealing	5 e	34	-- Edward	29	Wrexham	8 a	429
-- Alice J.	85	Maldon	4 a	509	-- Edward G.	63	Trowbridge	7 c	495
-- David	67	Lothlingland	4 b	764	-- Edward T.	69	Lewisham	5 d	72
-- Dorothy L.	48	Brighton	5 h	92	-- Eliza A.	68	Weymouth	6 a	536
-- Eliza	84	Wayland	4 b	622	-- Elizabeth	83	Andover	6 b	51
-- Eliza	80	Melton M.	3 a	683	-- Elizabeth	63	Willesden	5 r	229
-- Eliza A.	79	Bedford	4 a	54	-- Elizabeth	89	Paddington	5 d	181
-- Elizabeth	46	Walsall	9 b	593	-- Elizabeth	77	Mansfield	3 c	157
-- Frances A.	69	Leeds	2 c	227	-- Elizabeth	70	Basford	3 c	63
-- Frank	77	Saffron W.	4 a	578	-- Elizabeth A.	73	Haslingden	10 c	328
-- Frederick H.	63	Berkhamsted	4 b	3	-- Elizabeth J.	67	Penzance	7 a	99
-- George F.	73	Nottingham	3 c	301	-- Elizabeth S.	79	Durham E.	1 a	339
-- George H.	76	Deben	4 b	666	-- Ellen	90	Chatham	5 b	262
-- Hannah	31	Hitchin	4 b	109	-- Ellen A.	72	Poole	6 a	449
-- Herbert	73	Oxford	7 a	675	-- Ellen M.	82	Haslingden	10 c	288
-- Jack N.	52	Plympton	7 a	59	-- Emily	72	Croydon	5 g	29
-- Jeanette S.	2	Launceston	3 a	374	-- Emily	77	Canterbury	5 b	201
-- Joseph	87	Shardlow	5 c	291	-- Emily	65	Leicester	3 a	552
-- Mary	87	Westminster	5 a	439	-- Emily	90	Newbury	6 a	54
-- Nellie	73	Romford	1 b	457	-- Emily K.	73	Tonbridge	5 b	757
-- Rachel	55	Tynemouth	6 a	143		85	Hailsham	5 h	233
-- Robert G.H.	72	Wantage							

G.R.O. Deaths Index 2/4 1953

Ellen A. BARNES indicated

**George BARNES**  
b. 1792 Haslingden

!

!

**Mary A. Barnes**  
b. 1835 Haslingden

!

**Jane Barnes**  
b. 1838 Haslingden

**Mary**  
b. 1800 Accrington

!

!

**George BARNES**  
b. 1840 Haslingden

!

!

**m. 1866 Hyndburn**

!  
George  
William  
b. 1866  
!

!  
John  
Henry  
b. 1868  
!

!  
Sarah  
J.  
b. 1869  
!

!  
Margaret  
A.  
b. 1873 (twins)  
!

!  
Martha  
A.  
b. 1873  
!

!  
Jabez  
b. 1876 (twins)  
!

!  
Annie  
b. 1876  
!



**Ellen CATTERALL**

b. 1843 Haslingden

!

**Registrar**

!

---

!	!	!	!	!	!
<b>Thomas</b>	Albert	Herbert	Mary	Bertha	Wilfred
<b>Edwin</b>	b. 1979	b. 1881	E.	b. 1886	b. 1888
<b>BARNES</b>			b. 1884		

**b. 1878**

**Haslingden**

!

**d. 4/4 1917 Ormskirk**

!

**m. 1896**

**Baxenden St. John**

**Ellen Ann MADEN**

**b. 26 Oct 1870**

**bap. 4 Dec 1870 Gaukthorn**

**d. 10 May 1953 85 Westwood Street, Accrington**

!

---

!	!	!
<b>James Albert BARNES</b>	Bessie Maden	George Edwin
<b>b. 1896 Baxenden</b>	b. 1897 Accrington	b. 1901 Baxenden
!	!	!
<b>d. 4 Oct 1915</b>	d. 4/4 1897	d. 2/4 1901

d. 1911 Haslingden  
b. 1852 Accrington

**James MADEN**

!

d. 1943 Accrington

b. 1851 Oswaldtwistle

**Betty RILEY**

!

!

**m. 1870 Immanuel, Oswaldtwistle**

!

---

!	!	!	!	!	!	!	!	!
Betty	Lettice	Jane	Clara	Mary	Etty	Maggie	Edith	Minnie
b. 1873	b. 1874	Alice	b. 1876	b. 1877	b. 1881	b. 1883	b. 1884	b. 1889

b. 1875

!

!

m. 1900

St. Peter's  
Accrington

!

Arthur



**!**  
**France and Flanders**  
**Remembered**  
**Panel 20 – 22**  
**Loos Memorial**  
**X**

**X**

**X**

HALL

!

Walter Maden

b. 19 Mar 1901

Accrington

!

d. 26 Dec 1986

Accrington

!

Catherine

b. 30 Dec 1903

Accrington

!

d. 2 Aug 1994

Accrington





Extracts from the marriage register at St. Mary Magdalen, Accrington

PR 3057 / 1 / 4

Page 28

Entry No 55

26<sup>th</sup> September, 1925

Walter HALL

27 Batchelor

Clerk

65 Devonshire St  
Accrington

(father) Thomas HALL (Dec)  
Master builder

Daisy Beatrice  
GINN

23 Spinster

Weaver

65 Devonshire St  
Accrington

(father) Richard Charles GINN  
Motor Engineer

Witnesses

Mabel Pilkington

Herbert Hall

Extracts from the marriage register at St. Mary Magdalen, Accrington

PR 3057 / 1 / 4

Page 2

Entry No. 4

1 June 1921

Thomas William  
HORABIN

21 Batchelor

Colliery Clerk

29 Westwood St  
Accrington

(father) Joseph Horabin  
Railway servant

Ellen PICKUP

21 Spinster

---

103 Manor St  
Accrington

(father) Thomas Pickup  
Warehouseman

Witnesses

W. Hall

May Horabin



Extracts from the marriage register at St. Peter's, Accrington

PR 3059 / 1 / 2

Page 9

Entry No 18

18 April 1900

Arthur HALL	25	Batchelor	?looker	25 Corporation St Accrington	(father) Thomas Hall (Dec)
Clara MADEN	23	Spinster	---	89 Richmond St Accrington	(father) James Maden (Dec)

# CENSUS OF ENGLAND AND WALES, 1911.

Number of Schedule 12  
(To be filled up by the Enumerator after collection.)

*Before writing on this Schedule please read the Examples and the Instructions given on the other side of the paper, as well as the headings of the Columns. The entries should be written in Ink.*

*The contents of the Schedule will be treated as confidential. Strict care will be taken that no information is disclosed with regard to individual persons. The returns are not to be used for proof of age, as in connection with Old Age Pensions, or for any other purpose than the preparation of Statistical Tables.*

NAME AND SURNAME	RELATIONSHIP to Head of Family.	AGE (last Birthday) and SEX.		PARTICULARS as to MARRIAGE.					PROFESSION or OCCUPATION of Persons aged ten years and upwards.				BIRTHPLACE of every person.	NATIONALITY of every Person born in a Foreign Country.	INFIRMITY.	
		For Infants under one year state the age in months as "under one month," "one month," etc.	Ages of Males.	Ages of Females.	Write "Single," "Married," "Widow," or "Widower," opposite the names of all persons aged 15 years and upwards.	State, for each Married Woman entered on this Schedule, the number of:—  Completed years the present Marriage has lasted. If less than one year write "under one."	Children born alive to present Marriage. (If no children born alive write "None" in Column 7).	Total Children Born Alive.	Children still Living.	Children who have Died.	Personal Occupation.	Industry or Service with which worker is connected.				Whether Employer, Worker, or Working on Own Account.
<p>of every Person, whether Member of Family, Visitor, Boarder, or Servant, who</p> <p>(1) passed the night of Sunday, April 2nd, 1911, in this dwelling and was alive at midnight, or</p> <p>(2) arrived in this dwelling on the morning of Monday, April 3rd, not having been enumerated elsewhere.</p> <p>No one else must be included. (For order of entering names see Examples on back of Schedule.)</p>																
1.	2.	3.	4.	5.	6.	7.	8.	9.	10.	11.	12.	13.	14.	15.	16.	
1	Arthur Hall	Head	35	Married	X				Cotton Cloth Looker	Cotton Factory	Worker		Lancashire, Accrington	British		
2	Clara Hall	Wife	34	Married	11	2	2	0					Lancashire, Oswaldtwistle			
3	Walter Hall	Son	10						School	390			Lancashire, Accrington			
4	Catherine Hall	Daughter	7										Lancashire, Accrington			
5																
6																
7																
8																
9																
10																
11																
12																
13																
14																
15																

(To be filled up by the Enumerator.)

I certify that:—  
 (1) All the ages on this Schedule are entered in the proper sex columns.  
 (2) I have counted the males and females in Columns 3 and 4 separately, and have compared their sum with the total number of persons.  
 (3) After making the necessary enquiries I have completed all entries on the Schedule which appeared to be defective, and have corrected such as appeared to be erroneous.

Initials of Enumerator: RH

Total.		
Males.	Females.	Persons.
2	2	4

(To be filled up by, or on behalf of, the Head of Family or other person in occupation, or in charge, of this dwelling.)

Write below the Number of Rooms in this Dwelling (House, Tenement, or Apartment). Count the kitchen as a room but do not count scullery, landing, lobby, closet, bathroom; nor warehouse, office, shop.

3

I declare that this Schedule is correctly filled up to the best of my knowledge and belief.

Signature: Arthur Hall

Postal Address: 70 Abbey Street, Accrington

**The 1911 Census showing the Hall family at 70 Abbey Street, Accrington**

**Extracts from the Accrington Observer and Times Newspaper**

Saturday, 7 May, 1955

Page 7

**Hall** On 3<sup>rd</sup> May 1955 at 13 Entwistle Road, Accrington, Arthur, the dearly lived husband of Clara Hall, in his 81<sup>st</sup> year, and was interred at Accrington Cemetery, Thursday, May 5<sup>th</sup>.

Saturday, 4 January, 1958

Page 7

**Hall** On December 31<sup>st</sup> 1957 at 13 Entwistle Road, Accrington, Clara, beloved wife of the late Arthur Hall and mother of Catherine and Walter, aged 81 years, and was interred Accrington Cemetery Friday January 3<sup>rd</sup> 1958.

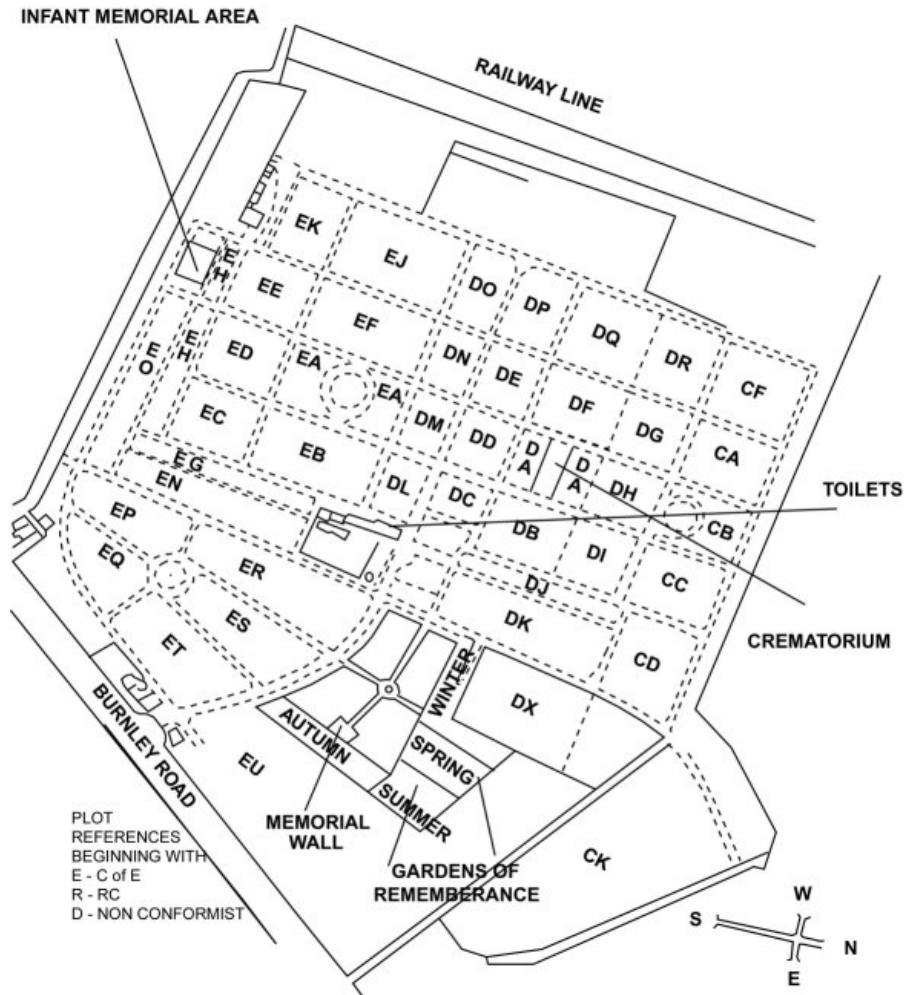
Friday, 5<sup>th</sup> August, 1994

Page 38

**Hall** On Tuesday 2<sup>nd</sup> August 1994 peacefully in a private nursing home, Catherine Hall aged 90 years, Entwistle Road, Accrington, the dearly loved sister of Walter and also a dear friend, reposing in the Chapel of Rest 170 Whalley Road, Clayton-le-Moors, from where the cortege will leave on Monday 8<sup>th</sup> August for an 11.30 service and cremation at Accrington Crematorium. No flowers by special request but donation if desired to the British Epilepsy Association / East Lancs Support Group c/o Mr. R. Berry, 11 Buckingham Drive Road, Burnley BB12 7QE. Further enquiries to L. Church Funeral Services Tel: 390731.



There is a plot in Accrington cemetery - ER/314 - which has the following MI:  
 "In loving memory of / Arthur Hall/ who died May 3rd 1955 / aged 80yrs / also Clara  
 / his dearly loved wife / who died Dec 31st 1957 / aged 81yrs / also their beloved son  
 / Walter Maden Hall /who died Dec 26th 1985 / aged 85yrs / and Catherine / their  
 beloved daughter / who died Aug 2nd 1994 /aged 90 yrs."





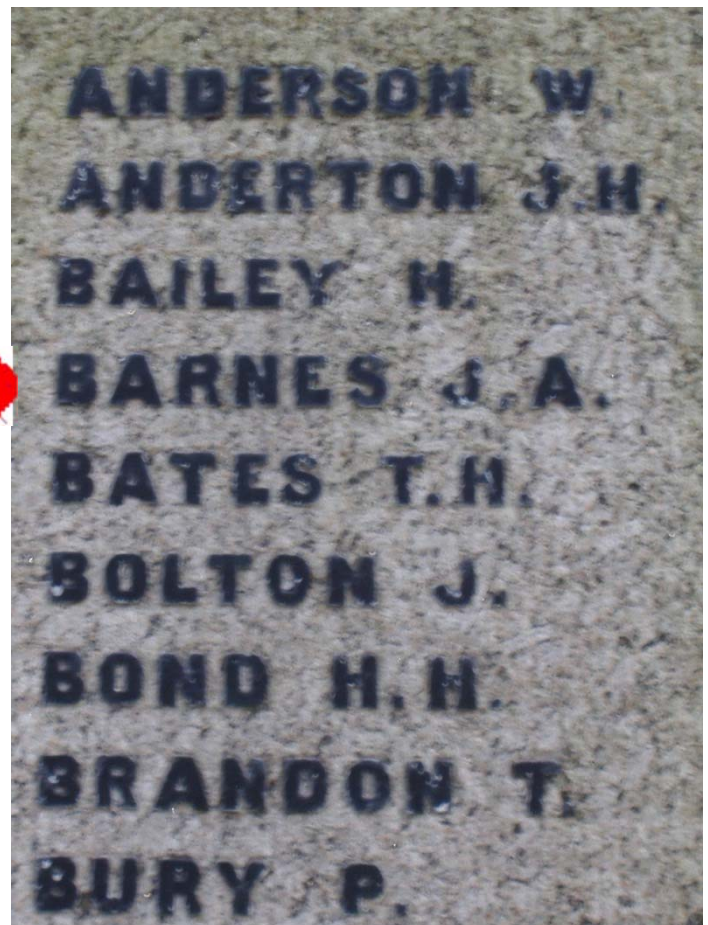
**St. John the Baptist Church, Manchester Road, Baxenden, Lancs...**  
**[www.baxendenstjohn.org.uk](http://www.baxendenstjohn.org.uk)      01254-396351      Rev. Tom Donaghey**





...with it's war memorial  
and close up highlighting

J. A. Barnes





## **BAXENDEN WAR MEMORIAL**

Baxenden chose a memorial cross. The cross of ornate design is just inside the entrance to St. John the Baptist churchyard off Manchester Road. The base is of Cornish granite. The octagonal base and pedestal stands atop five steps. The shaft and cross is a solid piece of granite. On the pedestal facing the church is the inscription "This memorial was erected by public subscription to the glory of God and in memory of our Baxenden lads who gave their lives for us in the Great War 1914-1918. Greater love hath no man than this." On the reverse, facing passers-by, is "In Memory of our Baxenden lads". Thirty six names are inset in lead on the pedestal base. The designer was Mr. W. J. Newton, Accrington's Borough Surveyor. The cost was £450. Although the memorial is in St. John's churchyard, it is in no sense a denominational memorial, but representative of all who lived within the bounds of what was the old ecclesiastical parish.

The unveiling ceremony took place on November 13th 1920. Before the ceremony a joint service was held in the church by the Vicar, the Reverend W. Walker, assisted by the Rural Dean, Canon Downham, and the Reverend R. W. Hasler, minister of Baxenden Wesleyan Mission church. Special hymns were sung by the joint choirs of St. John's and Baxenden Wesleyan Mission.

The memorial was unveiled by Sir George Bullough, a local industrialist, and, in his own words, 'a Baxenden lad'. The ceremony, made more poignant by ceaselessly pouring rain, ended with, unusually for an English village, the playing of the Scottish funeral dirge 'The Flowers of the Forest' by Pipe Major McDonald of the Accrington Pipe Band.

For almost fifty years there has been no inscription on the memorial relating to the dead of the 1939-1945 war. There are, however, the names of Baxenden men on the Accrington War Memorial. Four names of Baxenden men who died between 1939 and 1946 were inscribed in November 1994

29 December 2013

E.mail to Churchwarden, St. John's Church, Baxenden

Good day Mr. Massey

My vicar here at Longton near Leyland, asked me some years ago to research the parochial war memorial here at St. Andrew's church, a task I continue with.

A name on our memorial is a James Albert BARNES, who turns out to have been born at Baxenden before he was killed in action in October 1915. His remains were never recovered and he is remembered on the LOOS Memorial.

I have already carried out a limited amount of research into him and his family and have found that he is also shown on the war memorial at your church of St. John, Baxenden.

When he went to war the three members of the family were living over here in Longton having previously been connected with farmsteads off Roundhill Road, though his father Thomas Edwin BARNES is registered as having died at Ormskirk in 1917 and his mother Ellen Ann nee MADEN is registered as having died in Accrington in 1953.

I have failed to find any references in the local newspapers of any mention of this family's names in any remembrance entry.

Questions:-

- Do you have any index to the graveyard that would show if either of the parents are buried at St. John's?
- Is there a plan of the graveyard that would identify the resting place of any deceased?
- Has anyone done any research into the names on the war memorial at St. John's, in particular that of James Albert BARNES?

Many thanks

Stewart McLoughlin





from: **STEWART MCLOUGHLIN** <big.makk@virgin.net>  
to: bursar@baxenden  
date: 29 December 2013 16:07  
subject: James Albert BARNES - Killed in Action - WW1

Good morning

Some years ago when I retired, my local vicar here at St. Andrew's, Longton, near Leyland, asked me to research the parochial war memorial displayed inside the church. I have continued doing this over many years.

Only recently I found that James Albert BARNES was 21 years of age when he was killed and though living here in Longton with his family when he went to war, the family originally came from farms off Roundhill Lane at Baxenden. His parents were married at St. John's and there were two other children who died at a young age. James was therefore referred too as 'an only child' when his death was reported. Thomas Edwin BARNES his father's death was notified in Ormskirk in 1917 and his mother Ellen Ann nee MADEN died in Accrington in 1953. I have been unable to trace any newspaper references to the family.

I have separately e.mailed the Churchwarden at St. John's to see if they have any parish records that would lead to any background into the family and especially what James Albert may have been involved with, schooling, employment, leisure pursuits etc. prior to the family leaving to live in Longton and he going off to war. A visit to St. John's recently showed that he is memorialised on the war memorial outside the church along with the Loos Memorial in France, as his remains were never found. (I was the one that came to your school on the day of the Nativity play requesting to take photographs) I shall hopefully be following up any source in his regimental records.

I am contacting yourselves to see if the school has any archive of the period, or know of any that is lodged in a public archive/library that could add to my search for information of James Albert and the successor modern day family, though I do not know at this stage if he actually attended your school or if he attended Stoneclough School which would have been closer to his then home.

Many thanks for your time.

Stewart McLoughlin

**NO REPLY RECEIVED**

from: STEWART MCLOUGHLIN <big.makk@virgin.net>  
to: anthonyginn  
date: 31 December 2013 18:09  
subject: James Albert BARNES - World War 1 - Family Tree

Hi Anthony

Many thanks for getting in touch with me about your family tree that is connected to that of James Albert BARNES. He was killed in action at the battle of Loos, just to the north of Lens, France, on 4 October, 1915. His remains were never found due to the prevailing circumstances surrounding the battle and he is remembered at the great Loos Memorial by the roadside, just short of Lens, along with 20,000 of his colleagues.

The family originally lived at farms off Roundhill Road, Baxenden but at some stage the family moved to Longton near Leyland, a farming/smallholding area, and it was from here that he went to war. Having lived on farms in Baxenden, I am presuming that is what they came over here to continue doing. James Albert is remembered on our parochial church memorial and on St. John's at Baxenden. However both his sister and brother died as infants and therefore he was referred too as an 'only child', the family line dying out when he was killed.

Dad, Thomas Edwin Barnes died in the Ormskirk area in 1917 and mum, Ellen Ann nee Maden died in Accrington in 1953, which is where Walter Hall comes into the story as the executor of her will. She died at 85 Westwood Street, Accrington, when living with Thomas William Horabin and his wife Ellen nee Pickup and I believe they may have had a son Jack in 1921. Don't know anything further about them so far.

Haven't been able to find anything in the local newspapers as yet that refers to any member of the family.

I have attached the family tree that I have worked out so far. You can print-off and then stick it together in the following fashion, which will give you a good lay-out:-

Stick page one alongside page two, then page three under page two, and page four under page one.

Any good at origami? i.e. 1+2  
4+3

Can you possibly work out your family tree that links into that of the Barnes and Hall families and send me a copy that I can incorporate into my file?

Would also appreciate contact details of Daisy in Northern Ireland just to see if she has any family recollections/memorabilia about James Albert, especially useful would be a photograph. That would be the ultimate prize.

So far I have over forty pages of miscellaneous reference to James Albert and the wider family.

Regards, be in touch.

Stewart McLoughlin

from: **anthony ginn**  
to: STEWART MCLOUGHLIN <big.makk@virgin.net>  
date: 2 January 2014 10:22  
subject: RE: James Albert BARNES - World War 1 - Family Tree

Hi Stewart.

I was speaking to my dad yesterday and showed him your email. He is going to get an address for Daisy for you. She married and her name changed to Newnes. My Dad said that his Uncle was called Walter Hall, although looking at you family tree I interpret it that he was called Walter Maden Hall, is this correct? The reason he would have been executor to the will is because he was an accountant according to my dad so I'm not sure that he would have taken any of the personal effects that you are looking for. He is going to see my gran either today or tomorrow and will see if she has any info. Ill get you the address for Daisy hopefully later today.

Thanks

Anthony

from: **anthony ginn**  
to: STEWART MCLOUGHLIN <big.makk@virgin.net>  
date: 3 January 2014 14:09  
subject: RE: James Albert BARNES - World War 1 - Family Tree

Hi Stewart.

Further to the emails here is the address and tel.no of Daisy Newns (sorry my previous spelling was incorrect)

Daisy Newns, 10 Cumberland

Thanks

Anthony

from: **STEWART MCLOUGHLIN** <big.makk@virgin.net>  
to: anthony ginn  
date: 3 January 2014 22:26  
subject: Re: James Albert BARNES - World War 1 - Family Tree

Thanks Anthony. Will ring her tomorrow (Saturday). Since we last spoke, I have learned of the actual home where soldier BARNES lived in here in Longton prior to him going to war.. The current occupier has certain archive in relation to the house's ownership and may well be prepared to share. May see her next week.

Be in touch.

Stewart



Name: **Walter Maden Hall**  
Birth Date: 19 Mar 1901  
Date of Registration: Dec 1986  
Age at Death: 85  
Registration District: Hyndburn and Rossendale  
Inferred County: Lancashire  
Volume: 40  
Page: 1337

Name: **Catherine Hall**  
Birth Date: 30 Dec 1903  
Date of Registration: Aug 1994  
Age at Death: 90  
Registration District: Hyndburn and Rossendale  
Inferred County: Lancashire  
Register Number: HY40A  
District and Subdistrict: 5861  
Entry number: 20

from: **Eileen Bullock**  
to: "stewart.mcloughlin" <big.makk@virgin.net>  
date: 10 January 2014 00:03  
subject: Hall family

Hi Stewart

I had a word with Mue and she says that the MI's you want for St James's Altham have been done and are available in book form in Accrington Library. If you wish next time I am in town I will call in and check them for you.

There is a plot in Accrington cemetery - ER/314 - which has the following MI:  
"In loving memory of / Arthur Hall/ who died May 3rd 1955 / aged 80yrs / also Clara / his dearly loved wife / who died Dec 31st 1957 / aged 81yrs / also their beloved son / Walter Maden Hall /who died Dec 26th 1985 / aged 85yrs / and Catherine / their beloved daughter / who died Aug 2nd 1994 /aged 90 yrs."

The plot records show that only Arthur and Clara are actually in the grave and Walter is not in the register. I only have register records to 1990 so cannot check Catherine. It may well be that they were cremated but the ashes were not interred in the grave.

Hope this info helps and let me know if there are any others you would like me to check.

Eileen

from: **STEWART MCLOUGHLIN** [big.makk@virgin.net](mailto:big.makk@virgin.net)  
to: Eileen Bullock  
date: 10 January 2014 19:11  
subject: Re: Hall family

Hi Eileen

Many thanks for your time, trouble and expertise, it certainly puts this family together for me, but also I think it will exclude the Ginn line that I had been following as the two Walters now appear to be separate people.

Looks so far that neither Walter or Catherine married or had children but would love to see who handled the funeral arrangements on their behalf. Another trawl at the newspaper BMD's. Doesn't it take time. One answer only brings up three more questions.

I see by the timing of your message that you were burning the midnight oils. I looked at it just as I was closing the PC down to go to bed and before I knew it I was back into my file and Ancestry and when I looked at the clock it was 3am.

This hobby just grabs you and takes up an inordinate amount of time. Pity I'm not getting minimum wage.

A visit to the grave for a photo of the M.I. now looks on the cards also. I take it of course that Arthur died in nineteen 55

Many thanks once again.

Stewart

from: **STEWART MCLOUGHLIN** [big.makk@virgin.net](mailto:big.makk@virgin.net)  
to: jeanharrison  
date: 11 January 2014 14:50  
subject: JAMES ALBERT BARNES - BAXENDEN - WW1 WAR CASUALTY

Hi Jean

I been given your contact details by Eileen Bullock at LFHHS. She says you may be able to help me in my quest.

My vicar here at Longton near Leyland, asked me some years ago to research the parochial war memorial here at St. Andrew's church, a task I continue with.

A name on our memorial is a James Albert BARNES, who turns out to have been born at Baxenden before he was killed in action in October 1915. His remains were never recovered and he is remembered on the LOOS Memorial.

I have already carried out a limited amount of research into him and his family and have found that he is also shown on the war memorial at St. John, Baxenden.

When he went to war the three members of the family were living over here in Longton having previously been connected with farmsteads off Roundhill Road, though his father Thomas Edwin BARNES is registered as having died at Ormskirk in 1917 and his mother Ellen Ann nee MADEN is registered as having died in Accrington in 1953.

I have failed to find any references in the local newspapers of any mention of this family's names in any remembrance entry.

Eileen tells me that you may be able to assist in pointing to someone who may have done any research on the names at St. John's memorial, particularly James Albert BARNES.

I should be very obliged of any assistance, particularly in finding a modern day member of the family that may hold reminiscences or memorabilia. I have developed an extensive family tree, but not yet found a modern day relative.

Many thanks

Stewart McLoughlin  
(Preston Branch 4192)

from: **Jean Harrison**  
to: STEWART MCLOUGHLIN <big.makk@virgin.net>  
date: 13 January 2014 12:17  
subject: Re: JAMES ALBERT BARNES - BAXENDEN - WW1 WAR CASUALTY

Hi Stewart,

Thank you for your enquiry. I hope the following information and web sites are of use to you. I think it would be a good idea for you to contact Accrington Library as they have a specialist collection on World War 1 books etc. Also they have microfilm copies of the Accrington Observer which might be worth checking for an obituary. Contact for Accrington Library local studies is [www.Accrington.local-studies@lcl.lancsc.gov.uk](mailto:www.Accrington.local-studies@lcl.lancsc.gov.uk)

The sites I have checked are listed below with the info. I have found.

[www.pals.org.uk/honour/baxenden..htm](http://www.pals.org.uk/honour/baxenden..htm)

BARNES, Pte. James Albert, 15095 (2nd Bn., Northumberland Fusiliers); born at Accrington; k.i.a. 4th October 1915; comm. Loos Memorial. [3, 4, 9]

There is a link on the above site to "In memory of our Baxenden lads" by Bill Turner. I have also checked this site by the late Bill Turner but his details are incorrect as he says that James Albert Barnes in on the Thiepval Memorial.

If you contact Accrington Library it would be as well to tell them that these details are incorrect. A colleague of the late Bill Turner, Walter Holmes has helped with Bill's research on the Accrington Pals and may have helped with his Baxenden research as well. The library may be able to put you in touch with him. As far as I am aware all of Bill's research notes are now housed in Accrington Library.

Commonwealth War Graves site only gives the following details

[www.cwgc.org](http://www.cwgc.org)

In Memory of

Private

James Albert Barnes

Remembered with Honour



Loos Memorial  
15095, 2nd Bn., Northumberland Fusiliers who died on 04 October 1915

Regards

Jean

from: **STEWART MCLOUGHLIN** <big.makk@virgin.net>  
to: Jean Harrison  
date: 13 January 2014 18:30  
subject: Re: JAMES ALBERT BARNES - BAXENDEN - WW1 WAR CASUALTY

Hi Jean

Many thanks for your time and pointers. I have visited Accrington Library but there are no mentions of Pte. Barnes in the newspapers, apparently the newspapers have been scrolled and all WW1 mentions transcribed, but Pte. Barnes wasn't found. It may be that there was some time between him initially going missing and then presumed dead that there were 'fresher' casualties to report, or that as he had moved out of the area, he was no longer considered 'local'.

I have his CWGC memorial but his service record hasn't survived.

I shall be onto the 'pals' site immediately and shall be visiting the library this week to follow up on the others you mention.

Many thanks once again.

Stewart